

nora®
Certified quality products for
orthopaedic shoe engineering,
general orthopaedics, and
shoe repairs

Product range
2008/2009

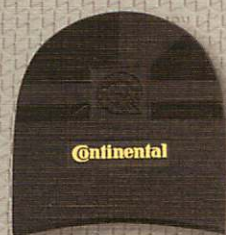
nora®



Qualität · Hygiene
SG plus
nora®
Zertifizierte und
überwachte
Produktionsstätte

nora Lunairmed
Profil Stärke Farbe Kontrolle
3.0 mm 07 2281220000

Geprüfte Qualität
hautverträglich
Regelmäßige
**INSTITUT
FRESENIUS**
Qualitätskontrolle



nora SYSTEMS GMBH
shoe components

Branded articles for orthopaedic applications and shoe repairs

Rubber is able to resiliently withstand enormous stresses when subjected to various influences. This fascinating material has been used in **nora**[®] materials for more than 70 years through innovative developments, trend-setting production processes, and uncompromising quality assurance for

- **orthopaedic shoe engineering**
- **general orthopaedics**, and
- **shoe repairs.**

The **nora**[®] portfolio thus supplies processors from three business sectors with a multi-faceted range of diversified products from one single source:

Heel and soling materials with excellent walking properties and long life as well as the well-known high-quality **nora**[®] EVA sheets, which have proven themselves as excellent lifting and inner-shoe material worldwide.



Uncompromising quality assurance and environmental compatibility

For us, as manufacturer of components for medical products made in Germany, responsible quality management and exemplary environmental compatibility are simply a matter of course.

All **nora**® products do not contain any toxic heavy metals or carcinogenic aromatic amines from azo dyes.

Raw materials and finished products alike are tested and issued in line with stringent **nora**® quality requirements.

Moreover, **nora**® products do not contain any pentachlorophenols (PCP), CFCs, or carcinogenic n-nitrosamines.

As one of the first manufacturers in this type of industry, our company has been registered in the list of companies complying with the EC Eco-Audit Ordinance under the registration number D153-00016.



Register no.:
D-153-00016

In 2000, our company was in addition certified pursuant to DIN EN ISO 14001 (environmental management systems).



Certified:
DIN EN ISO 14001

The certification according to DIN EN ISO 9001 guarantees the constant quality of manufacture, distribution, and marketing.



Tested quality guarantees safety for processors and patients

nora® products comply with statutory requirements

The German Medical Products Law (MPG) is in force since 1998 and governs the following requirements for orthopaedic aids such as individual inserts and custom-made orthopaedic shoes:

- **Toxicology:**
Materials causing allergic reactions of the skin may not be used.
- **Carcinogeny:**
Carcinogenic materials may not be used.

nora® products comply fully with these statutory requirements. This compliance is confirmed by a declaration of conformity.



Further measures for even more safety

Over and above the statutory requirements, we have had the nora® products certified by several independent and approved test institutes. These certificates are granted only if the test institutes regularly take random samples of the current production and the manufacturer concerned is able to evidence a quality management system, e.g. DIN EN ISO 9001.

» Conformity declaration «

For materials used to produce a medical product, the German Medical Products Law (MPG – Directive 93/42/EEC) requires the certification of safety of the materials used with regard to

- toxicology and
- carcinogeny.

nora® products fully comply with the requirements of MPG. nora® products do not contain any toxicologically harmful and no carcinogenic substances as e.g. carcinogenic amines from azo dyes.

In addition, nora® products are certified by regular tests carried out by renowned test institutes and may bear the following quality seals:

- skin tolerability certificate of the Institute Fresenius
- SG test mark "Schadstoffgeprüft"
- SG plus test mark

A prerequisite for the use of the above mentioned quality seals is a continuous production monitoring by a quality management system. The certification according to DIN EN ISO 9001 guarantees the constant quality of manufacture, distribution, and marketing of the nora® products.

Confirmed in December 2007.

P. Müller
P. Müller
Manager Sales and Marketing

Dr. G. Heidecke
Dr. G. Heidecke
Technical officer for occupational safety - chemistry

Phone: +49 6201 80 5498 | Fax: +49 6201 88 4563
Email: info@nora.com | Internet: www.norashoe.com

nora systems GmbH
shoe components
Hühnerweg 2-4
69469 Weinheim
Germany

Local Court of Mannheim
HRB 703230
Managing directors:
Heinz Fischer
Christo Hufmann
Philipp Lefrenz

nora SYSTEMS GMBH
shoe components



Extension of the eco-label 'Schadstoffgeprüft (SG)' by:

Your asset of quality:

Tested wear behaviour and stability of **nora**® products through dynamic long-term stress tests.

Your asset of hygiene:

Proven disinfectability of contaminated foot beddings and inserts made of **nora**® materials.

Your asset of safety:

Apart from the materials, the production sites as well as the production processes of **nora**® products in Weinheim are regularly examined and certified.

The Fresenius expert opinion on skin-tolerability

The skin-tolerability of flesh-coloured **nora**® products is confirmed by the Fresenius Institute based on regular comprehensive inspections and test series. These products bear the appropriate Fresenius quality seal. Regular inspections by Fresenius guarantee maximum safety.

The SG test mark

This pollutant test mark for our industry is granted by various approved test institutes on the basis of intensive material analyses. The SG package acknowledges not only the analysis of legally prescribed parameters but also e.g. that no carcinogenic amines were detected. Numerous **nora**® products are tested and certified in line with the SG list of criteria.

And finally, the in-house quality assurance measures taken are supplemented by checks performed by the Freudenberg Forschungsdienste KG, which is an independent laboratory accredited and certified pursuant to DIN EN ISO 9001.

Thus, chemical-physical tests are regularly performed e.g. on raw materials and finished products.

SG plus certification:

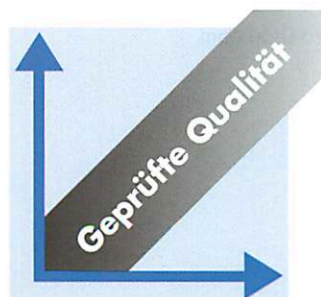
Qualität · Hygiene



Zertifizierte und überwachte Produktionsstätte



SCHADSTOFFGEPRÜFT



Relationship between practical requirements and customer-orientated service

Quality products from the **nora**[®] range are characterised by an excellent workability, especially in terms of easy sanding, bonding, and thermoplastic mouldability. They also provide a broad spectrum of colours for applications involving all parts of the shoe, inserts and technical orthopaedic applications. From bright natural hues and classical dark colours up to the diverse colour programme. Coordinated colours across many products make it possible to combine lifting and soling materials in matching colours.

Our colour coding system, well-known throughout the industry, facilitates the search for the right colour. The colour system at a glance is listed on the pages 50-52.

You can rely on the professional **nora**[®] customer service and our excellent product quality. You can rely on us!



Contact details for our customer service in Weinheim:

Phone Sales National:

+49 (0)6201 80-5342

Phone Sales International:

+49 (0)6201 80-7716

Phone Marketing Department:

+49 (0)6201 80-5498

Email: info-shoe@nora.com

Internet: www.nora-shoe.com

News by email -

Do you know our newsletter?

With the **nora**[®] shoe components Newsletter, we are regularly informing you by email about interesting issues in orthopaedic shoe engineering, general orthopaedics, and shoe repair. Free and without any obligation.

Just take a few seconds and register now on www.nora-shoe.com.

Overview nora® range 2008/2009

Heeling material

Page



Heels	Primus, Interstyle, Supra-Plus, Gloria Classic, Classic SL, Sport-Club, Contact Robusta, Contrec, Artikel 200	9 10 11
Die-cut pieces	Elite, CX	12
Heel sheets	Elite, Contan, Autosoler Glorit Astral H, Cordial, Comfort	13 14 15
Heel piece strips	Elite, Astral H, Contan	16
Wedge strips	Compakt K, Astral K, Astro K	17

Outsole material

Page



Half-soles	Corso, Pep, bel-paso, Contact, Robusta Orix, Berghaken, Contrec, Contilit	19 20
Long soles	Sport-Contact, Contano, Conmonta	21
Soling sheets	Contilit, Constant, Extra, Por, Contol, Contol A, Contol FB	22 23
Heeling strips	Contilit K	23
Soling sheets	Astral Durotrans Astro Astrolight Star, Astrolight Delta Astro Soft Lunalight Lunasoft	24/25 26/27 28/29 30 31/32 32 32/33

Lift sheets and inner-shoe material

Page



Lift sheets and cushioning sheets	Lunalight A Lunasoft AL, Lunatec SE Lunasoft SL Lunasoft SL color Lunasoft SL color plus, SL trendline, SL cork, SL quattro Lunasoft SLW Schweizer Puffergummi, Lunacell	35 36 37 38 39 40 41
Lifting wedge strips	Lunalight K, Lunasoft SLW wedge, Schweizer Puffergummi wedge	42
Cushioning sheets	Lunairmed, Lunairflex, Lunalastik Supersorb, Orthosorb	43 44
Stabilising sheets	Norit	44
Milling sheets	Lunatec CAD 45, 35, 25, Lunatec combiCAD 1	45
Composite sheets	Lunatec combi 1-6	46/47
Composite wedges	Lunatec combi SK 1	48

Slip protection articles

Page

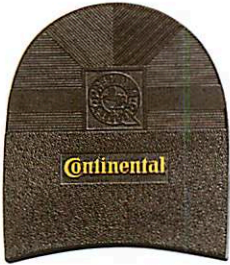
Shoe spikes	Spiky, Spiky-Plus	49
--------------------	-------------------	----

Heeling material

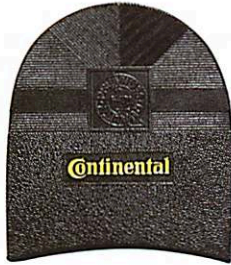


Heels

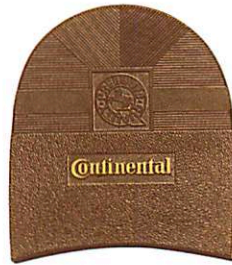
nora® Primus



51 black brown
6.5 mm



81 black
6.5 mm



101 leather brown
6.5 mm

Thickness: 6.5 mm
Hardness: approx. 80 Shore A
Colours: 51 black brown
Sizes: 160, 162, 166, 168, 170, 172, 176
81 black, 101 leather brown
Sizes: 166, 168, 170, 172, 176
Packaging unit: 10 pairs in a foil

nora® Primus is an elegant heel for first-class men's shoes. The high-quality properties are highlighted by the characteristic gold stamp.

Properties: highly resilient, wear-resistant, broad outline, sanded back, with Continental gold stamp.

nora® Interstyle



51 black brown
7 mm

Thickness: 7 mm
Hardness: approx. 80 Shore A
Colour: 51 black brown
Sizes: 166, 168, 170, 172, 174, 176
Packaging unit: 10 pairs in a foil

nora® Interstyle is an high-quality heel for elegant men's shoes.

Properties: highly resilient, wear-resistant, sanded back, with red, round inlay.

nora® Supra-Plus



51 black brown
6 mm

Thickness: 6 mm
Hardness: approx. 80 Shore A
Colour: 51 black brown
Sizes: 166, 168, 170, 172, 174
Packaging unit: 10 pairs in a foil

nora® Supra-Plus is a modern heel for elegant men's shoes.

Properties: highly resilient, wear-resistant, sanded back, with green, distinctive Contitech inlay.

nora® Gloria



51 black brown
7 mm

Thickness: 7 mm
Hardness: approx. 80 Shore A
Colour: 51 black brown
Sizes: 166, 168, 170, 172, 174, 176
Packaging unit: 10 pairs in a foil

nora® Gloria is a classical heel for shoe repairs.

Properties: highly resilient, wear-resistant, sanded back, classic single-coloured.

Heels

nora® Classic



51 black brown
8 mm (4 mm leather)

Thickness: 8 mm (4 mm leather)
Hardness: approx. 80 Shore A (rubber corner)
Colour: 51 black brown
Sizes: 168, 170, 172, 176
Packaging unit: 5 pairs in a box

nora® Classic is the classical heel for exclusive, premium shoes. The combination of highly resilient **nora®** rubber material, German tanned sole leather from the tannery Joh. Rendenbach jr., and branded adhesive from Renia make this heel an exclusive branded product. This heel is particularly suited for welted shoes.

Properties: symmetric design, sanded back, JR stamp embossed in leather heel piece, Contitech imprint in the rubber corner.

nora® Classic SL



51 black brown
6 mm (3 mm leather)

Thickness: 6 mm (3 mm leather)
Hardness: approx. 80 Shore A (rubber corner)
Colour: 51 black brown
Sizes: 166, 170, 176
Packaging unit: 5 pairs in a box

The combination of highly resilient **nora®** rubber material, German tanned sole leather from the tannery Joh. Rendenbach jr., and branded adhesive from Renia make this heel an exclusive branded product.

Properties: light-weight, symmetric design, sanded back, JR stamp embossed in leather heel piece, Contitech imprint in the rubber corner.

nora® Sport-Club



51 black brown
7.5 mm

Thickness: 7.5 mm
Hardness: approx. 80 Shore A
Colour: 51 black brown
Sizes: 164, 166, 168, 170, 172, 174
Packaging unit: 10 pairs in a foil

nora® Sport-Club is a sporty heel with anti-slip two-stage profile for sturdy footwear. This heel is the ideal complement of the **nora® Orix** half-soles.

Properties: highly resilient, wear-resistant, sanded back, with gold stamp.

nora® Contact



51 black brown
7.5 mm

Thickness: 7.5 mm
Hardness: approx. 82 Shore A
Colour: 51 black brown
Sizes: 162, 166, 170, 174
Packaging unit: 10 pairs in a foil

nora® Contact is an anti-slip heel with winter profile for sturdy footwear. This heel is the ideal complement of the **nora® Contact** half-soles.

Properties: especially resilient and abrasion-resistant, (transparent rubber), sanded back.

nora® Robusta



51 black brown
6 mm/ladies
8 mm/men



81 black
6 mm/ladies
8 mm/men



208 caramel
8 mm/men

Thicknesses: Ladies' version: 6 mm
Men's version: 8 mm
Hardness: approx. 82 Shore A
Colours: 51 black brown, 81 black
Sizes: 140, 144, 148, 170, 174
208 caramel
Sizes: 170, 174
Packaging unit: 10 pairs in a foil

nora® Robusta is a robust heel with raised profile for light hiking boots. This heel is the ideal complement of the **nora® Robusta** half-soles.

Properties: especially resilient and abrasion-resistant, (transparent rubber), sanded back.

nora® Contrec



51 black brown
12 mm



81 black
12 mm

Thickness: 12 mm
Hardness: approx. 75 Shore A
Colours: 51 black brown, 81 black
Sizes: 168, 172, 176
Packaging unit: 5 pairs in a foil

nora® Contrec is a block heel with rough raised profile for sturdy hiking boots or working shoes. This heel is the ideal complement of the **nora® Contrec** half-soles.

Properties: especially resilient and abrasion-resistant, (transparent rubber), sanded back.

nora® Artikel 200



51 black brown
12 mm

Thickness: 12 mm
Hardness: approx. 80 Shore A
Colour: 51 black brown
Sizes: 214, 215, 216
Packaging unit: 5 pairs in a foil

nora® Artikel 200 is a block heel with extensive rough raised profile for sturdy working shoes. This heel is the ideal complement of the **nora® Berghaken** half-soles.

Die-cut pieces

nora® Elite



51 black brown
6 mm



101 leather brown
6 mm

Profile: 33 brilliant
Thickness: 6 mm
Hardness: approx. 90 Shore A (tread surface)
Colour: 51 black brown
Sizes: 130, 132, 134, 136, 138, 140, 142, 144, 146, 148
Packaging unit: 10 pairs in a box, alternatively 1 kg in a box
Colour: 101 leather brown
Sizes: 138, 140, 142, 144,
Packaging unit: 10 pairs in a box

nora® Elite is a stylish die-cut piece with stabilising pad for economic and durable repairs. This die-cut piece is the ideal complement of the **nora® Contilit** soling sheets or half-soles.

Properties: with stabilising pad, sanded back.

nora® CX



51 black brown
5.2 mm

Profile: 471 honeycomb
Thickness: 5.2 mm
Hardness: approx. 93 Shore A (tread surface)
Colour: 51 black brown
Sizes: 130, 132, 134, 136, 138, 140, 142, 144, 146, 148
Packaging unit: 10 pairs in a box

With its discrete honeycomb profile, **nora® CX** is the classic among die-cut pieces. The stabilising pad provides this thin heel piece with the required stability.

Properties: with stabilising pad, sanded back.

Heel sheets

nora® Elite



51 black brown
5/6 mm



81 black
5/6 mm



101 leather brown
6 mm

Profile: 33 brilliant
Format: approx. 800 x 500 mm
Thicknesses: 5/6 mm
Hardness: approx. 93 Shore A
Colours: 51 black brown, 81 black
With a stabilising pad:
Thickness: 6 mm
Hardness: approx. 90 Shore A (tread surface)
Colours: 51 black brown, 101 leather brown

nora® Elite profile 33 is a fine-profiled heel sheet for stylish repairs. The non-directional „Continental“ in the profile makes this heel sheet a branded product with recognition factor.

Properties: partially with stabilising pad, sanded back.

nora® Elite



51 black brown
6/7.5 mm

Profile: 37 prism
Format: approx. 800 x 500 mm
Thicknesses: 6/7.5 mm
Hardness: approx. 90 Shore A (tread surface)
Colour: 51 black brown

nora® Elite profile 37 is a coarse-profiled heel sheet with winter profile for a safe foothold.

Properties: 6 mm version with stabilising pad, sanded back.

nora® Contan



81 black
6 mm

Profile: 33 brilliant
Format: approx. 500 x 400 mm
Thickness: 6 mm
Hardness: approx. 83 Shore A (tread surface)
Colour: 81 black

nora® Contan is a high-quality small sheet for heel pieces for the repair of ladies' shoes with small heel tread surfaces. The resilient rubber mixture guarantees high walking comfort and excellent abrasion resistance (comparable with PU heeling material).

Properties: with stabilising pad, resilient, excellent abrasion resistance, sanded back.

nora® Autosoler



51 black brown
6 mm

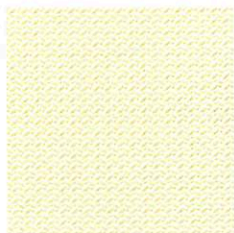
Profile: 26 fine crepe
Format: approx. 1000 x 550 mm
Thickness: 6 mm
Hardness: approx. 93 Shore A (tread surface)
Colour: 51 black brown

With its fine crepe profile, nora® Autosoler is the classic among the heel sheets.

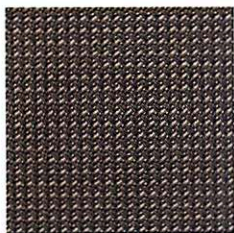
Properties: with stabilising pad, sanded back.

Heel sheets

nora® Glorit



02 cream white
5.5 mm



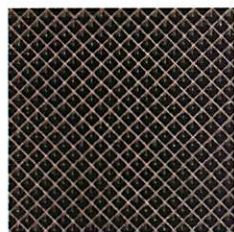
51 black brown
5.5 mm

Profile: 39 fresko
Format: approx. 800 x 500 mm
Thickness: 5.5 mm
Hardness: approx. 93 Shore A
Colours: 02 cream white, 51 black brown

nora® Glorit profile 39 is an elegant heel sheet with a particularly fine profile.

Properties: sanded back.

nora® Glorit



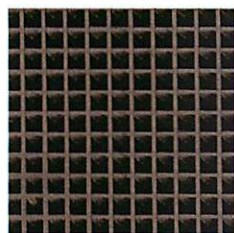
51 black brown
6 mm

Profile: 405 pyramid medium
Format: approx. 770 x 480 mm
Thickness: 6 mm
Hardness: approx. 90 Shore A (tread surface)
Colour: 51 black brown

nora® Glorit profile 405 is a classical heel sheet with a medium pyramid profile for a safe tread.

Properties: with stabilising pad, sanded back.

nora® Glorit



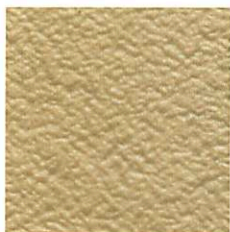
51 black brown
6/7.5 mm

Profile: 406 pyramid large
Format: approx. 770 x 480 mm
Thicknesses: 6/7.5 mm
Hardness: approx. 93 Shore A
Colour: 51 black brown

nora® Glorit profile 406 is a coarse-profiled heel sheet for heavy, stable footwear.

Properties: sanded back.

nora® Astral H



11 sand
6 mm



54 smoke
6 mm



81 black
6 mm



104 tropic
6 mm

Profile: 62 medium crepe
Format: approx. 1000 x 550 mm
Thickness: 6 mm
Hardness: approx. 87 Shore A
Colours: 11 sand, 54 smoke, 81 black, 104 tropic

nora® Astral H is a hard, resilient heel sheet made of transparent rubber with medium crepe profile. This grade is above all optimally suited for hollow heels.

Properties: sanded back.

nora® Cordial



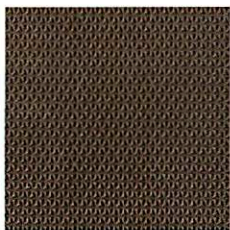
51 black brown
7 mm

Profile: 44 chain
Format: approx. 800 x 500 mm
Thickness: 7 mm
Hardness: approx. 87 Shore A
Colour: 51 black brown

nora® Cordial is the classical "soft rubber" heel sheet for demanding heel repairs.

Properties: sanded back.

nora® Comfort



51 black brown
7 mm



81 black
7 mm

Profile: 06 cristal
Format: approx. 770 x 535 mm
Thickness: 7 mm
Hardness: approx. 67 Shore A
Colours: 51 black brown, 81 black

nora® Comfort is a highly resilient heel sheet, excellently suited for special sizes and special shapes.

Properties: highly resilient, wear-resistant, non-slip and shock-absorbing, high walking comfort thanks to a soft compound harmonisation, stable bottom required, sanded back.

Heel piece strips

nora® Elite



51 black brown
6 mm

Profile: 33 brilliant
Thickness: 6 mm
Hardness: approx. 90 Shore A (tread surface)
Colour: 51 black brown
Length: approx. 500 mm
Widths: 60, 70, 80 mm

The heel piece strips **nora® Elite** are excellently suited for the economic repair of heels. The strips are made from the heel sheet **nora® Elite** and can be ideally combined with **nora® Contilit** soling sheets or die-cut half-soles.

Properties: with stabilising pad, sanded back.

nora® Astral H



11 sand
6 mm



54 smoke
6 mm



81 black
6 mm



104 tropic
6 mm

Profile: 62 medium crepe
Thickness: 6 mm
Hardness: approx. 87 Shore A
Colours: 11 sand, 54 smoke, 81 black, 104 tropic
Length: approx. 1000 mm
Widths: 55, 72, 85 mm

nora® Astral H heel piece strips made of hard, resilient transparent rubber with medium crepe profile are excellently suited for any economic heel repair. The heel piece strips are made of the heel sheet **nora® Astral H**.

Properties: sanded back

nora® Contan



81 black
6 mm

Profile: 33 brilliant
Thickness: 6 mm
Hardness: approx. 83 Shore A (tread surface)
Colour: 81 black
Length: approx. 500 mm
Widths: 30, 40, 50, 60 mm

nora® Contan is a high-quality heel piece strip, particularly suited for the repair of ladies' shoes with small heel tread surfaces. The resilient rubber mixture guarantees high walking comfort and excellent abrasion resistance (comparable with PU heeling material). The heel piece strips are made of the heel sheet **nora® Contan**.

Properties: with stabilising pad, resilient, excellent abrasion resistance, sanded back.

Wedge strips

nora® Kompakt K



02 cream white

51 black brown

81 black

Profile: 13 rippled
Hardness: approx. 87 Shore A
Colours: 02 cream white, 51 black brown, 81 black
Length: approx. 1,070 mm

nora® Kompakt K are universally usable wedge strips.

Properties: wear-resistant, shock-resistant, excellent bonding properties.

Dimensions \ No.	02	51	81
8 x 40 mm		•	•
10 x 50 mm	•	•	•
14 x 65 mm		•	

nora® Astral K



01 ivory

03 honey

09 white

15 pebble

43 mud

54 smoke

81 black

Profile: 62 medium crepe
Hardness: approx. 69 Shore A
Colours: 01 ivory, 03 honey, 09 white, 15 pebble, 43 mud, 54 smoke, 81 black
Length: approx. 930 mm

nora® Astral H is multi-purpose wedge strip with crepe profile, made of transparent rubber. **nora® Astral K** develops excellent stretch properties when bonded to soft bottoms (PU, EVA, and TR).

Properties: wear-resistant, shock-resistant, excellent bonding properties, high stretch properties.

Dimensions \ No.	01	03	09	15	43	54	81
8 x 40 mm		•			•	•	•
10 x 50 mm	•	•		•	•	•	•
10 x 60 mm		•	•		•	•	•
10 x 80 mm						•	•
14 x 65 mm						•	•

nora® Astro K



09 white

17 grey beige

19 stone

46 dark brown

81 black

Profile: 62 medium crepe
Hardness: approx. 50 Shore A
Density: approx. 0.70 g/cm³
Colours: 09 white, 17 grey beige, 19 stone, 46 dark brown, 81 black
Length: approx. 1040 mm

nora® Astro K are specifically lightweight wedge strips made of expanded rubber with crepe profile, in matching colours to **nora® Astro** soling sheets.

Properties: wear-resistant, shock-resistant, excellent bonding properties.

Dimensions \ No.	09	17	19	46	81
10 x 60 mm	•	•	•	•	•
10 x 80 mm				•	•

Outsole material



Half-soles

nora® Corso



51 black brown
2 mm

Thickness: 2 mm
Hardness: approx. 80 Shore A
Colour: 51 black brown
Sizes: D, H
Packaging unit: 10 pairs in a foil

nora® Corso is a lightweight protecting sole, particularly suitable to improve the weathering resistance of leather bottoms.

D = Ladies
H = Men

nora® Pep



51 black brown
2.5 mm

Thickness: 2.5 mm
Hardness: approx. 80 Shore A
Colour: 51 black brown
Sizes: D, H
Packaging unit: 10 pairs in a foil

nora® Pep is a half-sole with anti-slip rippled profile, particularly suitable for the repair of light footwear.

D = Ladies
H = Men

nora® bel-paso



51 black brown
3 mm



81 black
3 mm



101 leather brown
3 mm

Thickness: 3 mm
Hardness: approx. 80 Shore A
Packaging unit: 10 pairs in a foil

nora® bel-paso is the high-quality classic among the half-soles. The rippled profile guarantees effective slip protection, also for elegant shoes. The new size 48/50 is suitable for oversize shoes.

S = extra-wide version.

Sizes	No.	51	81	101
Ladies				
37/38		•		
39/40		•	•	•
41/42		•		
41/42 S		•	•	•
Men				
40/41		•		
42/44		•	•	•
45/47		•		
45/47 S		•	•	•
48/50		•	•	

NEW

nora® Contact



51 black brown
4 mm

Thickness: 4 mm
Hardness: approx. 82 Shore A
Colour: 51 black brown
Sizes: 1, 2, 3
Packaging unit: 10 pairs in a foil

nora® Contact with saw tooth profile is a half-sole for safe grip and high slip-resistance. This half-sole is the excellent solution above all in winter and for sturdy footwear and can be ideally combined with the heel **nora® Contact**.

nora® Robusta



51 black brown
5 mm



81 black
5 mm



208 caramel
5 mm

Thickness: 5 mm
Hardness: approx. 82 Shore A
Colours: 51 black brown, 81 black
Sizes: 38/40, 41/43, 44/46
Colour: 208 caramel
Sizes: 41/43, 44/46
Packaging unit: 5 pairs in a foil

nora® Robusta is a robust half-sole made of transparent rubber with raised profile for light hiking boots, for rounded off repairs and can be ideally combined with the heel **nora® Robusta**.

Half-soles

nora® Orix



51 black brown
4.5/5.5 mm

Thickness: 4.5 mm
Colour: 51 black brown
Size: 41/42

Thickness: 5.5 mm
Colour: 51 black brown
Sizes: 42/44, 45/47

Hardness: approx. 80 Shore A
Packaging unit: 5 pairs in a foil

nora® Orix is a sporty half-sole with anti-slip two-stage profile for sturdy footwear and can be ideally combined with the heel **nora® Sport-Club**.

nora® Berghaken



51 black brown
6.5 mm

Thickness: 6.5 mm
Hardness: approx. 80 Shore A
Colour: 51 black brown
Sizes: 41/42, 43/44, 45/46, 46/47
Packaging unit: 5 pairs in a foil

nora® Berghaken is a half-sole with a large raised profile for sturdy working shoes and can be ideally combined with the heel **nora® Artikel 200**.

nora® Contrec



51 black brown
7.5 mm



81 black
7.5 mm

Thickness: 7.5 mm
Hardness: approx. 75 Shore A
Colours: 51 black brown, 81 black
Sizes: 38/40, 41/43, 44/46
Packaging unit: 5 pairs in a foil

nora® Contrec is a half-sole made of transparent rubber with rough raised profile for sturdy hiking boots or working shoes and can be ideally combined with the block heel **nora® Contrec**.

nora® Contilit



51 black brown
1.8 mm



81 black
1.8 mm

Profile: 32 brilliant
Thickness: 1.8 mm
Hardness: approx. 87 Shore A
Colours: 51 black brown, 81 black
Sizes: D1, D2, H1
Packaging unit: 10 pairs in a foil

nora® Contilit is a lightweight and thin, fine-profiled die-cut half-sole for stylish repairs, particularly suitable to improve the weathering resistance of leather bottoms and can be ideally combined with the heel piece or heel sheet **nora® Elite**.

D = Ladies, H = Men

Long soles

nora® Sport-Contact



51 black brown
7 mm

Thickness: 7 mm
Colour: 51 black brown
Sizes: 1, 2
Hardness: approx. 70 Shore A

nora® Sport-Contact is a flat sole with prominent "tyre" profile. With a consistent thickness of 7 mm and a broad outline, this sole is excellently suited for the repair of hiking boots.

nora® Contano



51 black brown
8 mm



81 black
8 mm

Thickness: 8 mm
Colours: 51 black brown, 81 black
Sizes: 37/40, 41/44, 45/48
Hardness: approx. 70 Shore A

nora® Contano is a resilient flat sole with prominent orange CONTITECH inlay. With a consistent thickness of 8 mm and a large outline, this sole is excellently suited for the repair of hiking boots.

nora® Conmonta



51 black brown
Forefoot 7.5 mm
Heel 24 mm



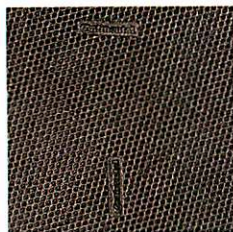
81 black
Forefoot 7.5 mm
Heel 24 mm

Thickness: Forefoot 7.5 / heel 24 mm
Hardness: approx. 70 Shore A
Colours: 51 black brown, 81 black
Sizes: 39/40, 41/42, 43/44, 45/46

nora® Conmonta is a resilient profiled sole with heel and prominent orange CONTITECH inlay. Large contours make this profiled sole a flexible, multipurpose sole.

Soling sheets

nora® Contilit



51 black brown
1.8/2.7/3.5/4.3 mm



81 black
1.8/2.7/3.5 mm



101 leather brown
1.8/2.7/3.5 mm

Profile: 32 brilliant
Format: approx. 1000 x 800 mm
Hardness: approx. 87 Shore A
Colours: 51 black brown
Thicknesses: 1.8/2.7/3.5/4.3 mm
Thicknesses: 81 black, 101 leather brown
Thicknesses: 1.8/2.7/3.5 mm

nora® Contilit is a fine-profiled soling sheet for stylish repairs and can be ideally combined with the heel piece or heel sheet **nora® Elite**. The non-directional "Continental" in the profile makes this soling sheet a branded product with recognition factor.

nora® Constant



51 black brown
2/3 mm

Profile: 457 fine wave
Format: approx. 960 x 770 mm
Thicknesses: 2/3 mm
Hardness: approx. 88 Shore A
Colour: 51 black brown

nora® Constant is a classic solid soling sheet with a timeless wave pattern and excellent bonding properties.

nora® Extra



51 black brown
4/6 mm

Profile: 59 coarse crepe
Format: approx. 930 x 800 mm
Thicknesses: 4/6 mm
Hardness: approx. 80 Shore A
Colour: 51 black brown

nora® Extra is a multipurpose solid soling sheet with a coarse crepe profile with a good grip for the repair of sturdy footwear. This soling sheet is a slip-resistant and resilient special grade.

nora® Por



26 leather brown
2.7/3.5/4.3 mm

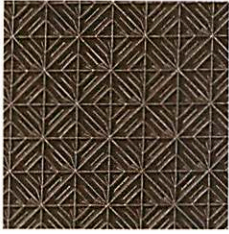


48 antique
2.7/3.5/4.3 mm

Surface: smooth
Format: approx. 1040 x 820 mm
Thicknesses: 2.7/3.5/4.3 mm
Hardness: approx. 93 Shore A
Density: approx. 1.00 g/cm³
Colours: 26 leather brown, 48 antique

nora® Por is a semi-expanded soling sheet for special use as "artificial" bottom leather for ladies' and men's shoes. This soling sheet has a long life, good bonding properties, and offers weight benefits as compared to solid soling sheets.

nora® Contol

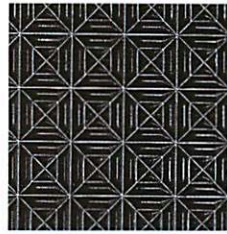


107 transparent brown
5 mm

Profile: 42 climber small
Format: approx. 1000 x 800 mm
Thickness: 5 mm
Hardness: approx. 70 Shore A
Colour: 107 transparent brown

nora® Contol is an abrasion-resistant soling sheet made of oil- and petrol-resistant special rubber mixture for the repair of working shoes with corresponding requirements.

nora® Contol A

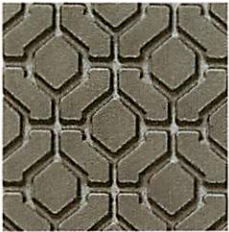


81 black
5 mm

Profile: 42 climber small
Format: approx. 1000 x 800 mm
Thickness: 5 mm
Hardness: approx. 71 Shore A
Colour: 81 black

nora® Contol A is an abrasion-resistant soling sheet made of oil- and petrol-resistant special rubber mixture with antistatic properties for the repair of working shoes with corresponding requirements.

nora® Contol FB



43 mud
5 mm



81 black
5/6.5 mm



106 ivory
5/6.5 mm

Profile: 48 block
Format: approx. 800 x 500 mm
Hardness: approx. 64 Shore A
Colours: 43 mud
Thickness: 5 mm
81 black, 106 ivory
Thicknesses: 5/6.5 mm

nora® Contol FB is an extremely slip-resistant special grade. This soling sheet is oil-, petrol-, and grease-resistant. The enormous slip-resistance is achieved by the open, bevelled profile with drainage to remove liquids. **nora® Contol FB** is especially suited for working shoes in wet areas, i.e. for walking on tile floors in connection with liquids, in particular in grease-contaminated rooms such as e.g. kitchens or dairies.

Heeling strips

nora® Contilit K



51 black brown



81 black



101 leather brown



110 beige

Surface: smooth
Length: approx. 1090 mm
Hardness: approx. 93 Shore A
Colours: 51 black brown, 81 black
Dimensions: 3 x 35 mm/4 x 40 mm
101 leather brown, 110 beige
Dimensions: 4 x 40 mm

nora® Contilit K is the tried-and-tested heeling strip for the repair of smooth shoe bottoms. Good bonding properties guarantee reliable heel repairs.

NEW

Soling sheets

nora® Astral are soling sheets made of transparent compact rubber for both sole and heel areas. The **Astral** grade is extremely wear- and slip-resistant and is characterised by a high level of extensibility. Thanks to the resilient special mixture with a hardness of approx. 69 Shore A, an excellent walking comfort is obtained.

nora® Astral is suitable both for high-quality repairs and for use as outsoles for orthopaedic shoe finishing and orthopaedic shoes. The variety of profiles and colours facilitates optimum adaptation to any shoe type and any season.

nora® Astral



03 honey
1.8 mm



09 white
1.8 mm



15 pebble
1.8 mm

Profile: 26 fine crepe
Format: approx. 1070 x 770 mm
Thickness: 1.8 mm
Hardness: approx. 69 Shore A
Colours: 03 honey, 09 white, 15 pebble, 54 smoke, 81 black

nora® Astral profile 26 fine crepe in the thickness of 1.8 is particularly suitable to produce dished edges.



54 smoke
1.8 mm



81 black
1.8 mm

nora® Astral



01 ivory
4/6 mm



03 honey
4/6 mm



09 white
4/6 mm

Profile: 62 medium crepe
Format: approx. 1000 x 550 mm
Hardness: approx. 69 Shore A
Colours: 01 ivory, 03 honey, 09 white, 15 pebble, 43 mud, 54 smoke, 81 black



15 pebble
4/6 mm



43 mud
4/6 mm



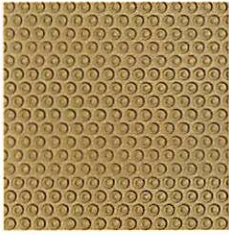
54 smoke
4/5/6/8 mm



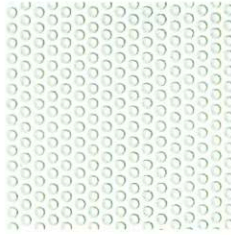
81 black
4/5/6/8 mm

Thicknesses \ No.	01	03	09	15	43	54	81
4 mm	•	•	•	•	•	•	•
5 mm						•	•
6 mm	•	•	•	•	•	•	•
8 mm						•	•

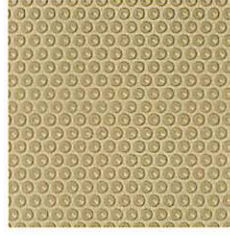
nora® Astral



03 honey
3 mm



09 white
3 mm



15 pebble
3 mm



54 smoke
3 mm

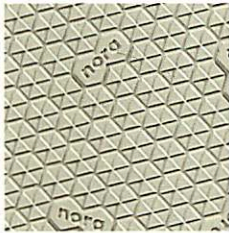


81 black
3 mm

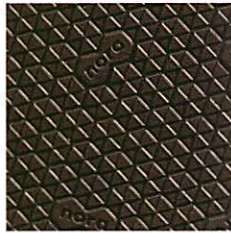
Profile: 87 mini-non-slip
Format: approx. 1070 x 770 mm
Thickness: 3 mm
Hardness: approx. 69 Shore A
Colours: 03 honey, 09 white, 15 pebble, 54 smoke, 81 black

nora® Astral

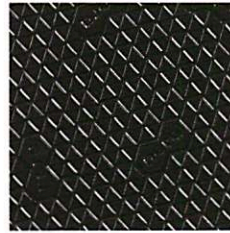
NEW



19 stone
2.5/4/6 mm



46 dark brown
2.5/4/6 mm



81 black
2.5/4/6 mm

Profile: 95 delta
Format: approx. 790 x 465 mm
Thicknesses: 2.5/4/6 mm
Hardness: approx. 69 Shore A
Colours: 19 stone, 46 dark brown, 81 black

nora® Astral profile 95 delta means an extraordinary look and safe tread. The small triangles of the profile are arranged to form a hexagon. The brand **nora®** harmoniously and nondirectionally fits into the product range.

nora® Astral



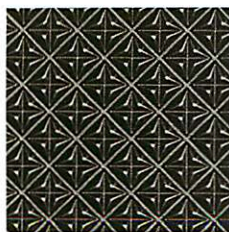
09 white
4/6 mm



81 black
4/6 mm

Profile: 58 coarse wave
Format: approx. 930 x 800 mm
Thicknesses: 4/6 mm
Hardness: approx. 69 Shore A
Colours: 09 white, 81 black

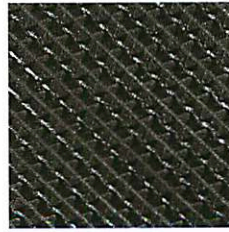
nora® Astral



54 smoke
4/6 mm

Profile: 03 cross pattern
Format: approx. 1070 x 770 mm
Thicknesses: 4/6 mm
Hardness: approx. 69 Shore A
Colour: 54 smoke

nora® Astral



54 smoke
5/6.5 mm

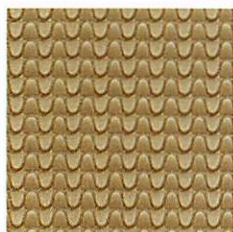
Profile: 74 double saw tooth
Format: approx. 1070 x 770 mm
Thicknesses: 5/6.5 mm
Hardness: approx. 69 Shore A
Colour: 54 smoke

Soling sheets

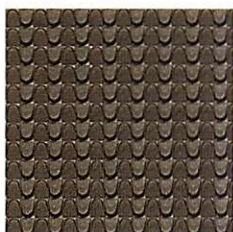
nora® Durotrans are soling sheets made of transparent compact rubber with prominent profiles for both sole and heel areas. The Durotrans grade is extremely wear- and slip-resistant and possesses excellent abrasion values and a high level of flexibility. Thanks to the resilient special mixture with a hardness of approx. 69 Shore A, an excellent walking comfort is obtained.

nora® Durotrans is suitable both for high-quality repairs and for use as outsoles for orthopaedic shoe finishing and orthopaedic shoes. The variety of profiles facilitates optimum adaptation to any shoe type and any season

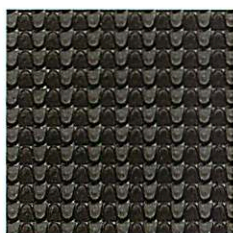
nora® Durotrans



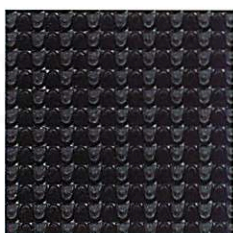
03 honey
4/6 mm



43 mud
4/6 mm



54 smoke
4/6 mm



81 black
4/6 mm

Profile: 34 grid
Format: approx. 800 x 500 mm
Thicknesses: 4/6 mm
Hardness: approx. 69 Shore A
Colours: 03 honey, 43 mud, 54 smoke, 81 black

nora® Durotrans



54 smoke
6 mm



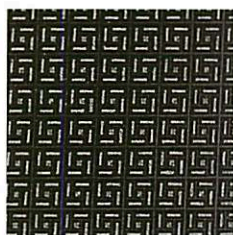
81 black
6 mm

Profile: 35 pastille
Format: approx. 800 x 500 mm
Thickness: 6 mm
Hardness: approx. 69 Shore A
Colours: 54 smoke, 81 black

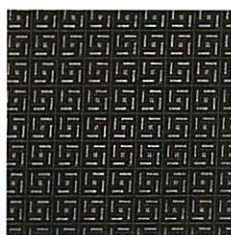
nora® Durotrans



03 honey
3/4/6 mm



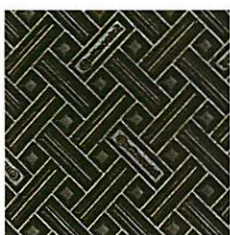
54 smoke
3/4/6 mm



81 black
3/4/6 mm

Profile: 36 square
Format: approx. 800 x 500 mm
Thicknesses: 3/4/6 mm
Hardness: approx. 69 Shore A
Colours: 03 honey, 54 smoke, 81 black

nora® Durotrans



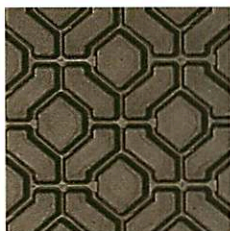
54 smoke
4/6 mm



81 black
4/6 mm

Profile: 37 prism
Format: approx. 800 x 500 mm
Thicknesses: 4/6 mm
Hardness: approx. 69 Shore A
Colours: 54 smoke, 81 black

nora® Durotrans



43 mud
6 mm



54 smoke
6 mm



81 black
6 mm

Profile: 48 block
Format: approx. 800 x 500 mm
Thickness: 6 mm
Hardness: approx. 69 Shore A
Colours: 43 mud, 54 smoke, 81 black

Soling sheets

nora® Astro are anti-slip soling sheets made of expanded rubber. With its low specific weight and its high slip- and abrasion-resistance, this soling grade is thus in particular suitable for use in orthopaedic shoes, shoe finishings, and demanding shoe repairs.

The colours of the **nora® Astro** range are matched to the colours of the **nora®** EVA materials and can be ideally combined.

nora® Astro



46 dark brown
6 mm

Profile: 12 groove
Format: approx. 930 x 730 mm
Thickness: 6 mm
Hardness: approx. 50 Shore A
Density: approx. 0.70 g/cm³
Colour: 46 dark brown

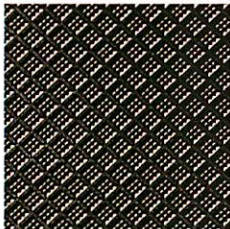
nora® Astro



57 smoke
6/8 mm

Profile: 59 coarse crepe
Format: approx. 880 x 510 mm
Thicknesses: 6/8 mm
Hardness: approx. 50 Shore A
Density: approx. 0.70 g/cm³
Colour: 57 smoke

nora® Astro



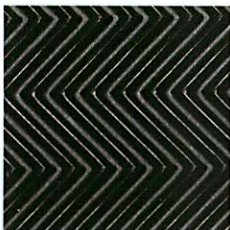
46 dark brown
4/6/8 mm



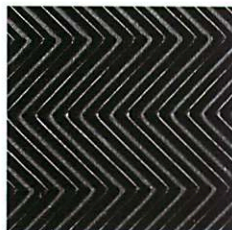
81 black
4/6/8 mm

Profile: 43 record
Format: approx. 900 x 900 mm
Thicknesses: 4/6/8 mm
Hardness: approx. 50 Shore A
Density: approx. 0.70 g/cm³
Colours: 46 dark brown, 81 black

nora® Astro



57 smoke
6 mm



81 black
6 mm

Profile: 58 coarse wave
Format: approx. 1020 x 880 mm
Thickness: 6 mm
Hardness: approx. 50 Shore A
Density: approx. 0.70 g/cm³
Colours: 57 smoke, 81 black

nora® Astro



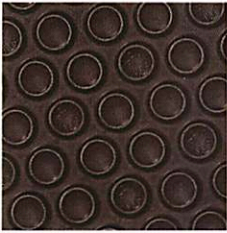
57 smoke
6 mm



81 black
6/8 mm

Profile: 62 medium crepe
Format: approx. 880 x 510 mm
Hardness: approx. 50 Shore A
Density: approx. 0.70 g/cm³
Colours: 57 smoke, 81 black
Thickness: 6 mm
Colour: 81 black
Thickness: 8 mm

nora® Astro



57 smoke
5/6 mm



81 black
5/6 mm

Profile: 65 suction cup
Format: approx. 1020 x 880 mm
Thicknesses: 5/6 mm
Hardness: approx. 50 Shore A
Density: approx. 0.70 g/cm³
Colours: 57 smoke, 81 black

nora® Astro



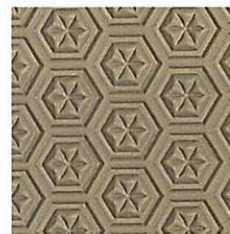
04 egg shell
4/6 mm



09 white
4/6 mm



15 pebble
4/6 mm



17 grey beige
4/6 mm



19 stone
4/6 mm



35 medium brown
4/6 mm



41 pale brown
4/6 mm



44 mocca
4/6 mm



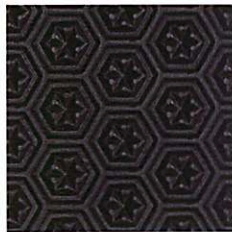
46 dark brown
4/6 mm



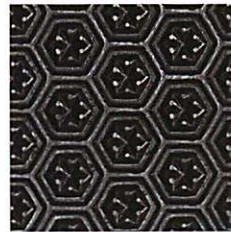
54 smoke
4/6 mm



56 stone grey
4/6 mm



78 dark blue
4/6 mm



81 black
4/6/8 mm

Profile: 64 star
Format: approx. 860 x 500 mm, 4 mm sheet
Format: approx. 880 x 510 mm, 6/8 mm sheet
Hardness: approx. 50 Shore A
Density: approx. 0.70 g/cm³
Colours: 04 egg shell, 09 white, 15 pebble, 17 grey beige, 19 stone, 35 medium brown, 41 pale brown, 44 mocca, 46 dark brown, 54 smoke, 56 stone grey, 78 dark blue, 81 black

Thicknesses \ No.	04	09	15	17	19	35	41	44	46	54	56	78	81
4 mm	•	•	•	•	•	•	•	•	•	•	•	•	•
6 mm	•	•	•	•	•	•	•	•	•	•	•	•	•
8 mm													•

Soling sheets

nora® Astrolight are anti-slip soling sheets made of expanded rubber. When developing the Astrolight grade, particular attention was directed to maintain the known good properties of Astro and at the same time to reduce the weight of the material.

The result: **nora® Astrolight** has a weight which was reduced by approx. 20 %. Low weight, excellent abrasion and extraordinary resilience make Astrolight the soling sheet for sophisticated demands in repair, shoe finishing, and production of flexible footwear.

nora® Astrolight Star



09 white
4/6 mm



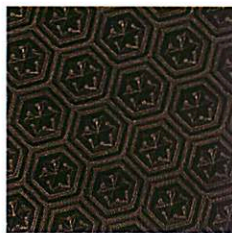
17 grey beige
4/6 mm



19 stone
4/6 mm



41 pale brown
4/6 mm



46 dark brown
4/6 mm

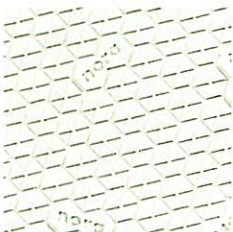


81 black
4/6 mm

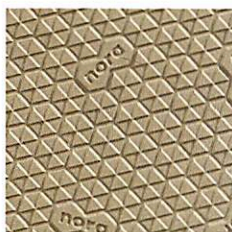
Profile: 64 star
Format: approx. 940 x 535 mm
Thicknesses: 4/6 mm
Hardness: approx. 50 Shore A
Density: approx. 0.55 g/cm³
Colours: 09 white, 17 grey beige, 19 stone, 41 pale brown, 46 dark brown, 81 black

Thicknesses \ No.	09	17	19	41	46	81
4 mm	•	•	•	•	•	•
6 mm	•	•	•	•	•	•

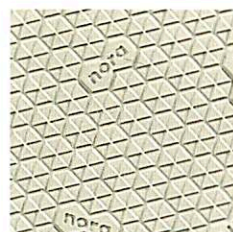
nora® Astrolight Delta



09 white
3/4/6 mm



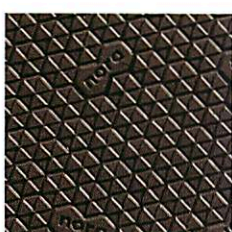
17 grey beige
3/4/6 mm



19 stone
3/4/6 mm



41 pale brown
3/4/6 mm



46 dark brown
3/4/6 mm



81 black
3/4/6 mm

Profile: 95 delta
Format: approx. 950 x 535 mm
Thicknesses: 3/4/6 mm
Hardness: approx. 50 Shore A
Density: approx. 0.55 g/cm³
Colours: 09 white, 17 grey beige, 19 stone, 41 pale brown, 46 dark brown, 81 black

The profile 95 delta means an extraordinary look and safe tread. The small triangles of the profile are arranged to form a hexagon. The brand **nora®** harmoniously and non-directionally fits into the product range.

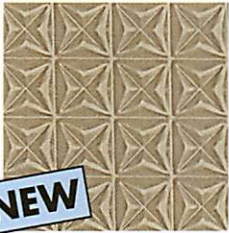
Thicknesses \ No.	09	17	19	41	46	81
3 mm	•	•	•	•	•	•
4 mm	•	•	•	•	•	•
6 mm	•	•	•	•	•	•

NEW

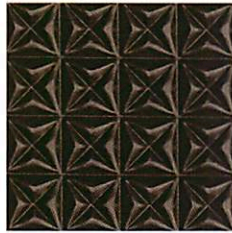
nora® Astro Soft are anti-slip soling sheets made of expanded rubber. The Astro Soft grade is slightly softer and approximately one third lighter than Astro and therefore even more adapted to the needs and requirements of modern repair and orthopaedic shoe engineering.

Apart from the high quality and low abrasion, modern outsole sheets above all demand a light weight. The colours of the **nora® Astro Soft** range are matched to the colours of the **nora® EVA** materials and can be ideally combined.

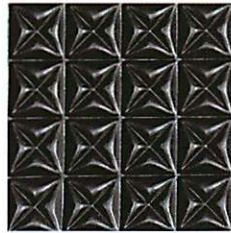
nora® Astro Soft



17 grey beige
6/8 mm



46 dark brown
6/8 mm



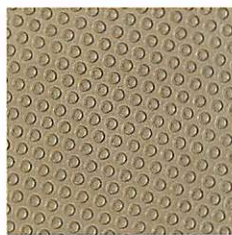
81 black
6/8 mm

Profile: 09 coarse cross pattern
Format: approx. 820 x 510 mm
Thicknesses: 6/8 mm
Hardness: approx. 45 Shore A
Density: approx. 0.44 g/cm³
Colours: 17 grey beige, 46 dark brown, 81 black

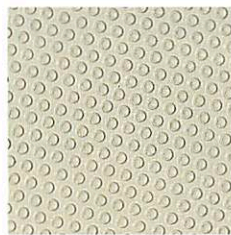
nora® Astro Soft



09 white
4/6/8 mm

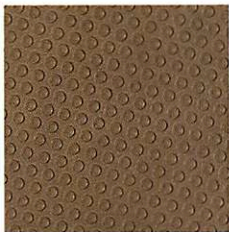


17 grey beige
4/6/8 mm

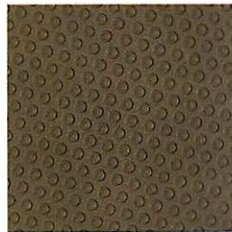


19 stone
4/6/8 mm

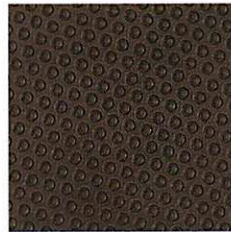
Profile: 87 mini non-slip
Formats: approx. 800 x 485 mm, 4 mm sheet
approx. 820 x 510 mm, 6/8 mm sheet
Hardness: approx. 45 Shore A
Density: approx. 0.44 g/cm³
Colours: 09 white, 17 grey beige, 19 stone, 41 pale brown, 44 mocca, 46 dark brown, 56 stone grey, 80 anthracite, 81 black



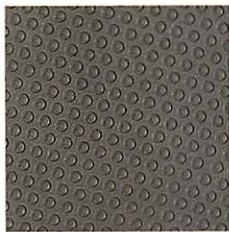
41 pale brown
6/8 mm



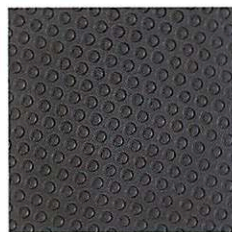
44 mocca
6/8 mm



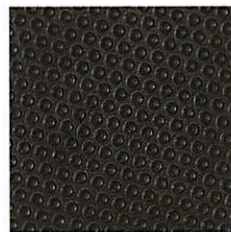
46 dark brown
4/6/8 mm



56 stone grey
6/8 mm



80 anthracite
6/8 mm

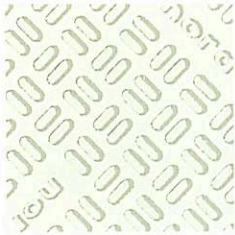


81 black
4/6/8 mm

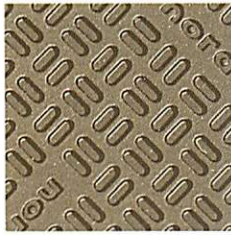
Thicknesses	No.	09	17	19	41	44	46	56	80	81
4 mm		•	•	•			•			•
6 mm		•	•	•	•	•	•	•	•	•
8 mm		•	•	•	•	•	•	•	•	•

Soling sheets

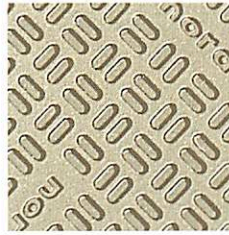
nora® Astro Soft



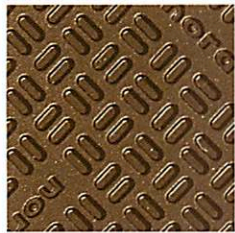
09 white
4/6/8 mm



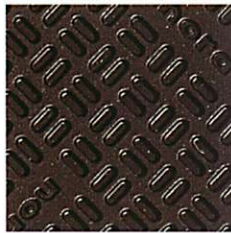
17 grey beige
4/6/8 mm



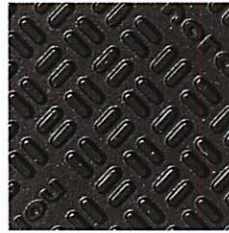
19 stone
4/6/8 mm



35 medium brown
4/6/8 mm



46 dark brown
4/6/8 mm



81 black
4/6/8 mm

Profile: 96 block fine
Format: approx. 800 x 485 mm,
4 mm sheet
approx. 820 x 510 mm,
6 and 8 mm sheet
Thicknesses: 4/6/8 mm
Hardness: approx. 45 Shore A
Density: approx. 0.44 g/cm³
Colours: 09 white, 17 grey beige, 19 stone,
35 medium brown, 46 dark brown,
81 black

nora® Astro Soft profile 96 block fine is the ideal outsole for elegant and sporty footwear. The non-directional „nora“ in the profile makes this soling sheet a branded product with recognition factor.

Profile properties:

- fine to medium profiling
- profile depth 0.7 mm
- alternating logo arrangements for non-directional use
- optimum wear behaviour regarding comfort and walking safety
- rounded profile edges, thus unsusceptible to clogging of the outsole surface

Thicknesses \ No.	09	17	19	35	46	81
4 mm	•	•	•	•	•	•
6 mm	•	•	•	•	•	•
8 mm	•	•	•	•	•	•

nora® Lunelight

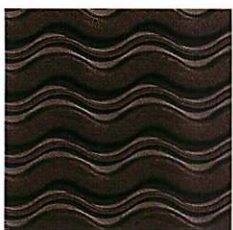


81 black
6/8/12 mm

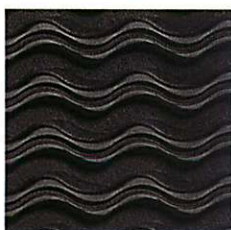
Profile: 20 leather grain
Format: approx. 860 x 550 mm
Thicknesses: 6/8/12 mm
Hardness: approx. 60 Shore A
Density: approx. 0.35 g/cm³
Colour: 81 black

nora® Lunelight is a noble EVA expanded soling sheet for a high-quality looking shoe. The Lunelight grade is the lightweight among the **nora®** soling sheets.

nora® Lunasoft



46 dark brown
8 mm



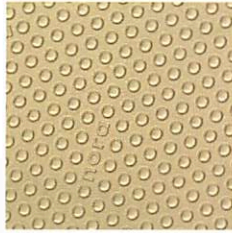
81 black
8 mm

Profile: 78 coarse wave
Format: approx. 1060 x 840 mm
Thickness: 8 mm
Hardness: approx. 50 Shore A
Density: approx. 0.38 g/cm³
Colours: 46 dark brown, 81 black

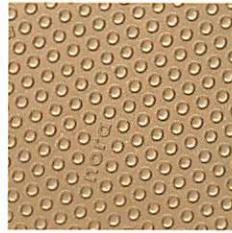
nora® Lunasoft



04 egg shell
4/6/8/10 mm



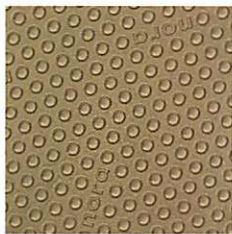
05 light beige
4/6/8/10 mm



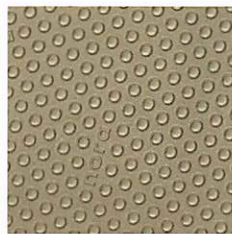
07 flesh colour
4/6/8/10 mm



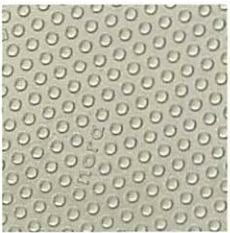
09 white
4/6/8/10 mm



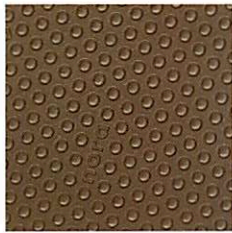
10 champagne
4/6/8/10 mm



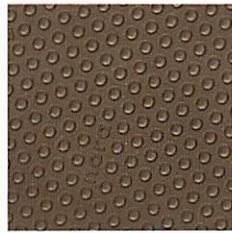
17 grey beige
4/6/8/10 mm



19 stone
4/6/8/10 mm



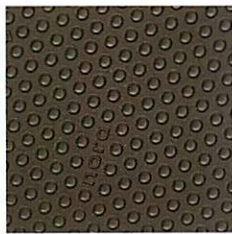
35 medium brown
4/6/8/10 mm



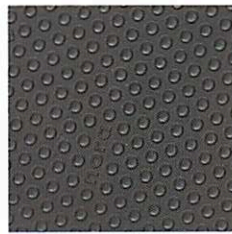
41 pale brown
4/6/8/10 mm



46 dark brown
4/6/8/10 mm



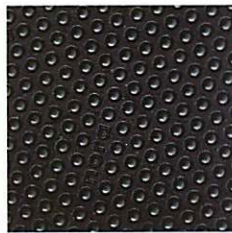
54 smoke
4/6/8/10 mm



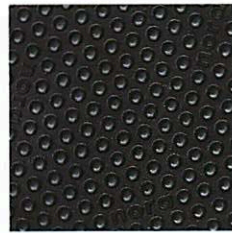
56 stone grey
4/6/8/10 mm



60 bright grey
4/6/8/10 mm



78 dark blue
4/6/8/10 mm



81 black
4/6/8/10 mm

Profile: 97 pastille
Format: approx. 840 x 520 mm
Hardness: approx. 50 Shore A
Density: approx. 0.38 g/cm³
Colours: 04 egg shell, 05 light beige, 07 flesh colour, 09 white, 10 champagne, 17 grey beige, 19 stone, 35 medium brown, 41 pale brown, 46 dark brown, 54 smoke, 56 stone grey, 60 bright grey, 78 dark blue, 81 black

nora® Lunasoft is an EVA expanded soling sheet, especially developed for orthopaedic shoe engineering. The **Lunasoft** grade is the ideal combination of low weight and excellent abrasion-resistance. This soling sheet is specifically lightweight, flexible, resilient, dimensionally stable and is characterised by a high walking comfort.

The pastille profile of **nora®** has become a classic among the lightweight and resilient soling materials for repairs and original outfit. The non-directional "nora" in the profile makes this soling sheet a branded product with recognition factor and documents the high quality level of **nora®** premium products.

Applications:

- for sports and leisure shoes
- for resilient street shoes
- for orthopaedic shoes
- for interim and bathing shoes

Processing notes:

- usual EVA bonding
- adapt contact pressure to the flexibility of the material
- Thermoformable at 120° - 170°C
- bonding with neoprene or polychloroprene adhesives
- PVC adhesives are not recommended

Thicknesses \ No.	04	05	07	09	10	17	19	35	41	46	54	56	60	78	81
4 mm	•	•	•	•	•	•	•	•	•	•	•	•	•	•	•
6 mm	•	•	•	•	•	•	•	•	•	•	•	•	•	•	•
8 mm	•	•	•	•	•	•	•	•	•	•	•	•	•	•	•
10 mm	•	•	•	•	•	•	•	•	•	•	•	•	•	•	•

Lift sheets and inner-shoe material



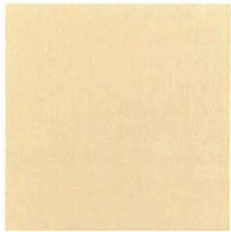
Qualität · Hygiene
SG
plus
PFI
nora
Zertifizierte und
überwachte
Produktionsstätte

nora Lunairmed
Profil Stärke Farbe Kontrolle
3.0mm 07 2281220000

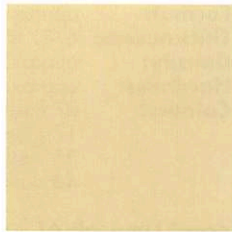
Geprüfte Qualität
hautverträglich
Regelmäßige
INSTITUT
FRESENIUS
Qualitätskontrolle

Lift sheets and cushioning sheets

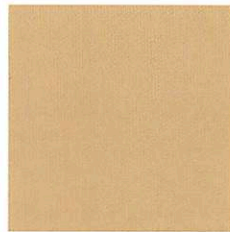
nora® Lunalign A EVA expanded sheets, smooth



04 egg shell



05 light beige



07 flesh colour

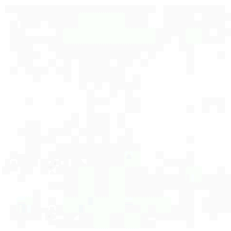
Format:
Density:
Hardness:
Colours:

approx. 860 x 550 mm
approx. 0.35 g/cm³
approx. 58 Shore A
04 egg shell, 05 light beige,
07 flesh colour, 09 white, 10 cham-
pagne, 17 grey beige, 19 stone,
35 medium brown, 41 pale brown,
44 mocca, 46 dark brown,
54 smoke, 56 stone grey, 60 bright
grey, 78 dark blue, 80 anthracite,
81 black

Properties:
particularly hard and rigid, dimensionally stable

Processing notes:
usual EVA bonding.
thermoformable at 120° - 170°C

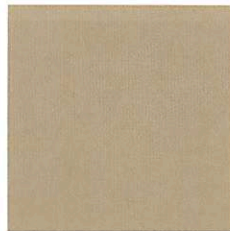
Applications:
lift sheets, for roll soles (for butterfly or joint rolls),
for elevation of outer and inner edges, for midsoles,
for shell bottoms



09 white

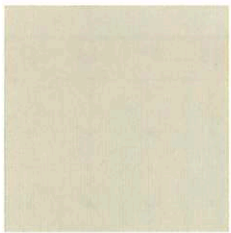


10 champagne

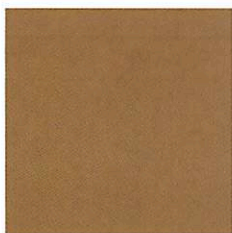


17 grey beige

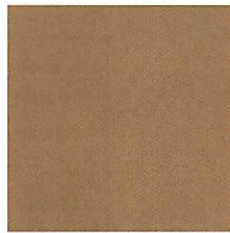
NEW



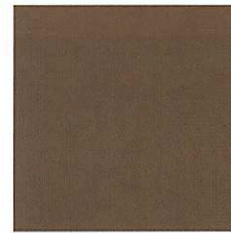
19 stone



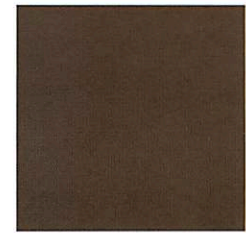
35 medium brown



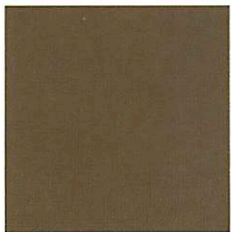
41 pale brown



44 mocca



46 dark brown



54 smoke



56 stone grey



60 bright grey



78 dark blue



80 anthracite

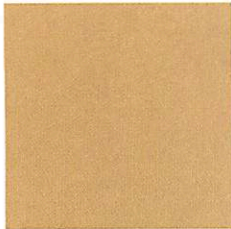


81 black

Thicknesses	No.	04	05	07	09	10	17	19	35	41	44	46	54	56	60	78	80	81
3 mm		•	•	•	•	•	•	•	•	•	•	•	•	•	•	•	•	•
4 mm		•	•	•	•	•	•	•	•	•	•	•	•	•	•	•	•	•
5 mm		•	•	•	•	•	•	•	•	•	•	•	•	•	•	•	•	•
6 mm		•	•	•	•	•	•	•	•	•	•	•	•	•	•	•	•	•
8 mm		•	•	•	•	•	•	•	•	•	•	•	•	•	•	•	•	•
10 mm		•	•	•	•	•	•	•	•	•	•	•	•	•	•	•	•	•
12 mm		•	•	•	•	•	•	•	•	•	•	•	•	•	•	•	•	•
14 mm		•	•	•	•	•	•	•	•	•	•	•	•	•	•	•	•	•
16 mm		•	•	•	•	•	•	•	•	•	•	•	•	•	•	•	•	•
20 mm		•	•	•	•	•	•	•	•	•	•	•	•	•	•	•	•	•
22 mm		•	•	•	•	•	•	•	•	•	•	•	•	•	•	•	•	•
24 mm		•	•	•	•	•	•	•	•	•	•	•	•	•	•	•	•	•

Lift sheets and cushioning sheets

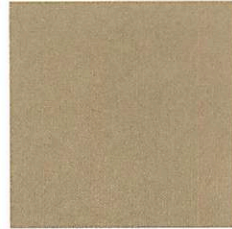
nora® Lunasoft AL EVA expanded sheets, smooth



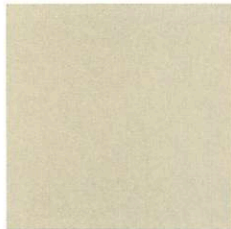
07 flesh colour
6/8/10/14/20 mm



09 white
6/8/10/14/20 mm



17 grey beige
6/8/10/14/20 mm



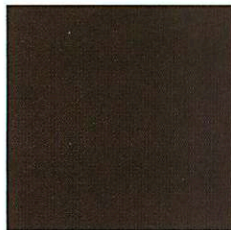
19 stone
6/8/10/14/20 mm



35 medium brown
6/8/10/14/20 mm



41 pale brown
6/8/10/14/20 mm



46 dark brown
6/8/10/14/20 mm



81 black
6/8/10/14/20 mm

Format: approx. 920 x 560 cm
Thicknesses: 6/8/10/14/20 mm
Density: approx. 0.26 g/cm³
Hardness: approx. 52 Shore A
Colours: 07 flesh colour, 09 white, 17 grey beige, 19 stone, 35 medium brown, 41 pale brown, 46 dark brown, 81 black

nora® Lunasoft AL is a lightweight and stable EVA expanded sheet which is above all particularly suited as lifting material for sports and leisure shoes and flexible street shoes. This high-quality lifting material is characterised by low weight and high stability.

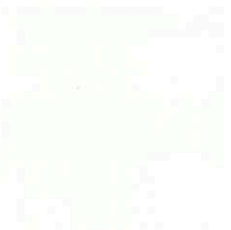
Processing notes:
thermoformable at 120° - 170°C.

Applications:
for inserts, sport inserts and food beddings as stabilising shaping element, e.g. to support the backfoot.

Thicknesses \ No.	07	09	17	19	35	41	46	81
6 mm	•	•	•	•	•	•	•	•
8 mm	•	•	•	•	•	•	•	•
10 mm	•	•	•	•	•	•	•	•
14 mm	•	•	•	•	•	•	•	•
20 mm	•	•	•	•	•	•	•	•

nora® Lunatec SE EVA expanded sheets, smooth

NEW



09 white
6/8/10/14 mm



56 stone grey
6/8/10/14 mm



137 terra
6/8/10/14 mm

Format: approx. 920 x 590 mm
Thicknesses: 6/8/10/14 mm
Density: approx. 0.28 g/cm³
Hardness: approx. 45 Shore A
Colours: 09 white, 56 stone grey, 137 terra

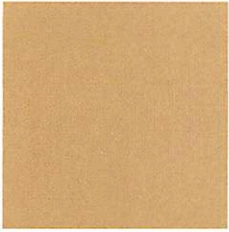
nora® Lunatec SE is a stable and resilient EVA expanded sheet which is above all particularly well-suited as lifting material for sports and street shoes as well as orthopaedic management. This high-quality lifting material is characterised by an excellent restoration capability and resilience as well as high dimensional stability.

Processing notes:
thermoformable at 120° - 170°C, formable in single-block process (for foot beddings).

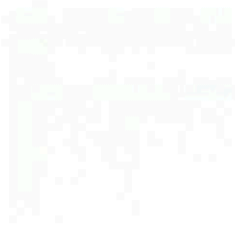
Applications:
for inserts, sport inserts and food beddings as stabilising shaping element, e.g. to support the backfoot, for shaping elements (e.g. in case of arthroses, ankle caps, paralysis caps, and semi-rigid tongues) or as upper material for interim and bathing shoes.

Thicknesses \ No.	09	56	137
6 mm	•	•	•
8 mm	•	•	•
10 mm	•	•	•
14 mm	•	•	•

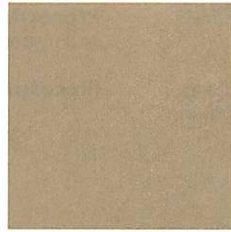
nora® Lunasoft SL EVA expanded sheets, smooth



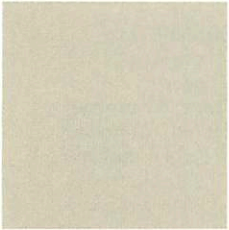
07 flesh colour



09 white



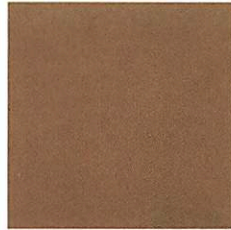
17 grey beige



19 stone



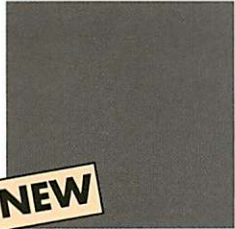
35 medium brown



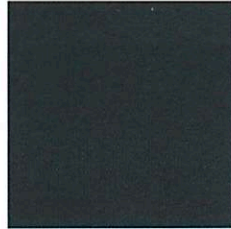
41 pale brown



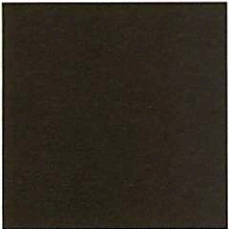
46 dark brown



56 stone grey



78 dark blue



81 black

Format: approx. 890 x 640 mm
Hardness: approx. 40 Shore A
Density: approx. 0.20 g/cm³
Colours: 07 flesh colour, 09 white, 17 grey beige, 19 stone, 35 medium brown, 41 pale brown, 46 dark brown, 56 stone grey, 78 dark blue, 81 black

nora® Lunasoft SL are very lightweight, smooth EVA expanded sheets which are used as lift and cushioning sheets as well as covering sheets.

Intended use: for beddings, inserts, sport inserts, soft sockets, and shaping elements of any kind.

Properties: lightweight, flexible and dimensionally stable, good restoration capability, high walking comfort. Washable and hygienic thanks to the closed cell structure.

Processing notes: usual EVA bonding. Adapt contact pressure to the flexibility of the material, horizontal deformation should be avoided. Thermally formable at 120° - 170°C.

Thicknesses \ No.	07	09	17	19	35	41	46	56	78	81
2 mm	•	•	•	•	•	•	•	•	•	•
3 mm	•	•	•	•	•	•	•	•	•	•
4 mm	•	•	•	•	•	•	•	•	•	•
5 mm	•	•	•	•	•	•	•	•	•	•
6 mm	•	•	•	•	•	•	•	•	•	•
8 mm	•	•	•	•	•	•	•	•	•	•
10 mm	•	•	•	•	•	•	•	•	•	•
12 mm	•	•	•	•	•	•	•	•	•	•
14 mm	•	•	•	•	•	•	•	•	•	•
20 mm	•	•	•	•	•	•	•	•	•	•
24 mm	•	•	•	•	•	•	•	•	•	•

Lift sheets and cushioning sheets

nora® Lunasoft SL color, color plus, trendline, cork and **quattro** are extremely lightweight, smooth EVA expanded sheets. Depending on the thickness of the material, these single-coloured and patterned versions of Lunasoft SL are used as covering sheets or as lift and cushioning sheets.

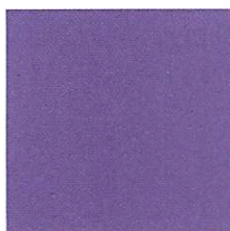
Intended use: for beddings, inserts, sport inserts, and shaping elements. To cover inserts, as midsole material for children's shoes

and as universal and skin-friendly covering of surfaces or outer shell of a 2-layer socket.

Properties: lightweight, resilient, dimensionally stable. Washable and hygienic thanks to the closed cell structure.

Processing notes: thermoformable at 120° - 170°C.

nora® Lunasoft SL color EVA expanded sheets, smooth



39 lilac
2/3/4/5/6 mm



65 blue
2/3/4/5/6 mm



69 orange
2/3/4/5/6 mm



70 yellow
2/3/4/5/6 mm



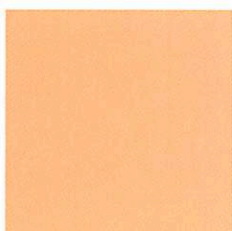
89 red
2/3/4/5/6 mm



98 green
2/3/4/5/6 mm



111 royal blue
2/3/4/5/6 mm



117 apricot
2/3/4/5/6 mm

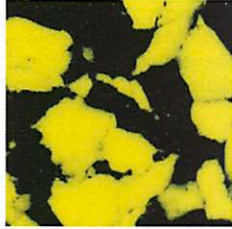
Format: approx. 1280 x 890 mm
Hardness: approx. 40 Shore A
Density: approx. 0.20 g/cm³
Colours: 39 lilac, 65 blue, 69 orange, 70 yellow, 89 red, 98 green, 111 royal blue, 117 apricot

Thicknesses \ No.	39	65	69	70	89	98	111	117
2 mm	•	•	•	•	•	•	•	•
3 mm	•	•	•	•	•	•	•	•
4 mm	•	•	•	•	•	•	•	•
5 mm	•	•	•	•	•	•	•	•
6 mm	•	•	•	•	•	•	•	•

nora® Lunasoft SL color plus



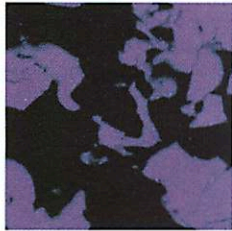
0281 white-black
2/3/4/5/6 mm



9581 lemon-black
2/3/4/5/6 mm



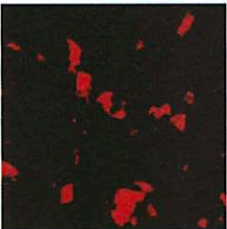
9681 pink-black
2/3/4/5/6 mm



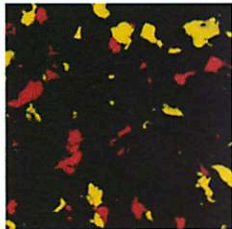
3981 lilac-black
2/3/4/5/6 mm

Format: approx. 1280 x 890 mm
Hardness: approx. 40 Shore A
Density: approx. 0.20 g/cm³
Colours: 0281 white-black,
 9581 lemon-black,
 9681 pink-black,
 3981 lilac-black

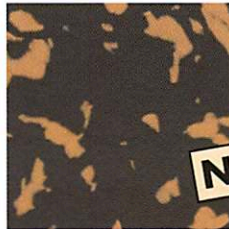
nora® Lunasoft SL trendline



4450 black-red
2/3/4/5/6 mm



4451 black-red-yellow
2/3/4/5/6 mm



4452 safari
2/3/4/5/6 mm

Format: approx. 1280 x 890 mm
Hardness: approx. 40 Shore A
Density: approx. 0.20 g/cm³
Colours: 4450 black-red,
 4451 black-red-yellow,
 4452 safari

NEW

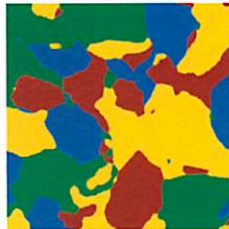
nora® Lunasoft SL cork



4445 cork look
2/3/4/5/6 mm

Format: approx. 1280 x 890 mm
Hardness: approx. 40 Shore A
Density: approx. 0.20 g/cm³
Colour: 4445 cork look

nora® Lunasoft SL quattro



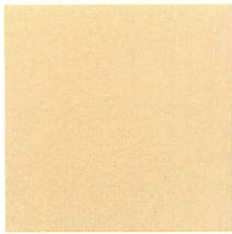
4444 four-coloured
2/3/4/5/6 mm

Format: approx. 1280 x 890 mm
Hardness: approx. 40 Shore A
Density: approx. 0.20 g/cm³
Colour: 4444 four-coloured

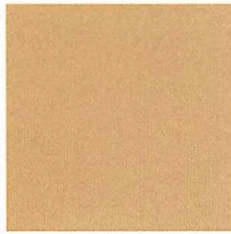
Thicknesses	No.	0281	9581	9681	3981	4450	4451	4452	4445	4444
2 mm		•	•	•	•	•	•	•	•	•
3 mm		•	•	•	•	•	•	•	•	•
4 mm		•	•	•	•	•	•	•	•	•
5 mm		•	•	•	•	•	•	•	•	•
6 mm		•	•	•	•	•	•	•	•	•

Lift sheets and cushioning sheets

nora® Lunasoft SLW EVA expanded sheets, smooth



04 egg shell



07 flesh colour

09 white

Format: approx. 890 x 640 mm
Hardness: approx. 30 Shore A
Density: approx. 0.20 g/cm³
Colours: 04 egg shell, 07 flesh colour, 09 white, 17 grey beige, 19 stone, 35 medium brown, 41 pale brown, 44 mocca, 46 dark brown, 56 stone grey, 78 dark blue, 81 black

nora® Lunasoft SLW are extremely lightweight, soft, smooth EVA expanded sheets.

Intended use:

as cushioning and shock-absorbing material for inserts, foot beddings, and sport inserts, as upper material for interim and bathing shoes, as shaping elements, e.g. resilient caps or as soft socket.

Properties:

lightweight, dimensionally stable, flexible and resilient; washable and hygienic thanks to closed cell structure.

Processing notes:

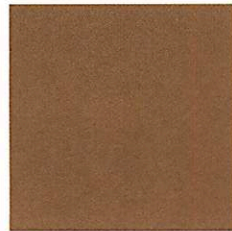
thermoformable at 120° - 170°C.



17 grey beige



19 stone



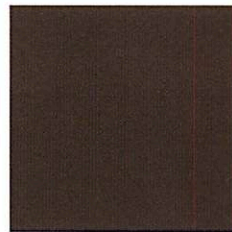
35 medium brown



41 pale brown



44 mocca



46 dark brown



56 stone grey



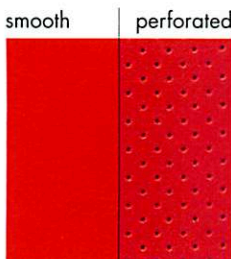
78 dark blue



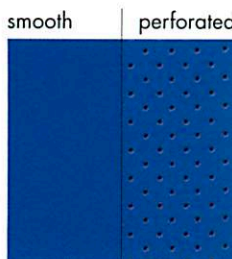
81 black

Thicknesses \ No.	04	07	09	17	19	35	41	44	46	56	78	81
2 mm	•	•	•	•	•	•	•	•	•	•	•	•
3 mm	•	•	•	•	•	•	•	•	•	•	•	•
4 mm	•	•	•	•	•	•	•	•	•	•	•	•
5 mm	•	•	•	•	•	•	•	•	•	•	•	•
6 mm	•	•	•	•	•	•	•	•	•	•	•	•
8 mm	•	•	•	•	•	•	•	•	•	•	•	•
10 mm	•	•	•	•	•	•	•	•	•	•	•	•
12 mm	•	•	•	•	•	•	•	•	•	•	•	•
14 mm	•	•	•	•	•	•	•	•	•	•	•	•
20 mm	•	•	•	•	•	•	•	•	•	•	•	•

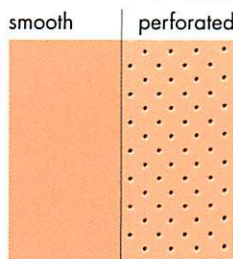
nora® Lunasoft SLW EVA expanded sheets, smooth or perforated



89 red
 2/3/4/5/6 mm
 perforated 2/3/4 mm



111 royal blue
 2/3/4/5/6 mm
 perforated 2/3/4 mm



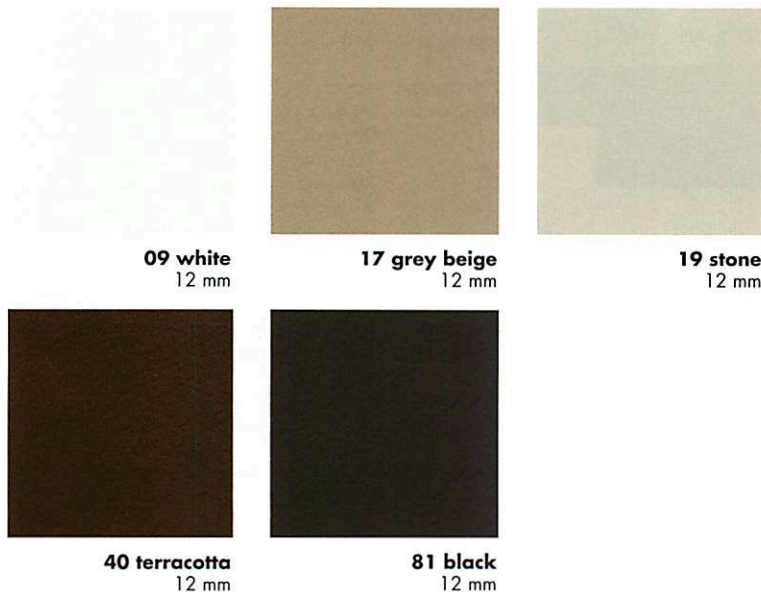
117 apricot
 2/3/4/5/6 mm
 perforated 2/3/4 mm

Format: approx. 1280 x 890 mm
Hardness: approx. 30 Shore A
Density: approx. 0.20 g/cm³
Colours: 89 red, 111 royal blue, 117 apricot

Thicknesses \ No.	89	111	117
2 mm	••	••	••
3 mm	••	••	••
4 mm	••	••	••
5 mm	•	•	•
6 mm	•	•	•

• = perforated

nora® Schweizer Puffergummi Expanded rubber sheets, smooth

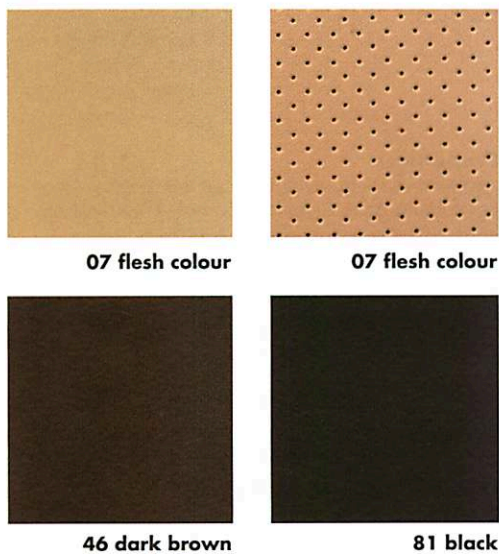


Format: approx. 840 x 520 mm
Thickness: 12 mm
Hardness: approx. 23 Shore A
Density: approx. 0.38 g/cm³
Colours: 09 white, 17 grey beige, 19 stone, 40 terracotta, 81 black

nora® Schweizer Puffergummi is the first choice for applications requiring high resilience and shock-absorbance as well as dimensional stability.

Properties:
 excellent shock-absorbing properties. Excellent walking comfort thanks to a combination of very low Shore hardness and a high restoration capability.

nora® Lunacell EVA expanded sheets, smooth or perforated



Hardness: approx. 68 Shore A
Density: approx. 0.37 g/cm³
Format: approx. 850 x 540 mm
Colours: 07 flesh colour
Thicknesses: 2/3/4/5/6/8/10/12 mm
 46 dark brown, 81 black
Thicknesses: 10/20 mm

Properties:
 anti-slip, scratch- and tear-resistant, highly stable, and unsusceptible to deformation, particularly hard and rigid, excellent trim properties.

Processing notes:
 usual EVA bonding, thermoformable at 120° - 170°C.

Applications:
 lift sheets
 - for working shoes with high demands
 - for Thomas heels with frontal median
 - for ladies' block heels
 - for wedge bottoms
 - for midsoles and stabilising parts for sports shoes in connection with Lunasoft A, SL, SLW, and Lunalight A
 - for inserts and foot beddings as high-stress reinforcing element

Format: approx. 1080 x 850 mm
Colours: 07 flesh colour/smooth or perforated
Thickness: 1.5 mm

Properties:
 particularly dimensionally stable.
Applications:
 covering material for smooth or formed inserts of ladies', men's and children's shoes. Ideal for inserts in shoes with membrane system.

Thicknesses	No.	07	46	81
1,5 mm		••		
2 mm		•		
3 mm		•		
4 mm		•		
5 mm		•		
6 mm		•		
8 mm		•		
10 mm		•	•	•
12 mm		•		
20 mm			•	•

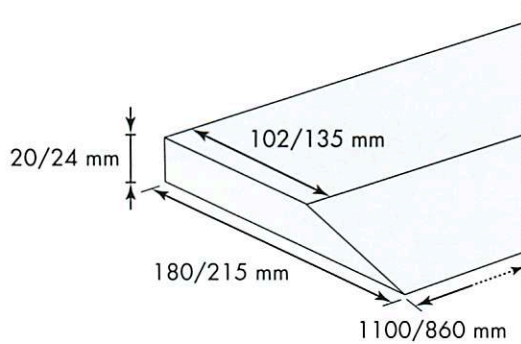
• = perforated

Lifting wedge strips

nora® Lunalight K EVA expanded lifting wedge strips, smooth



04	05	07	09	10	17
19	35	41	44	46	54
56	60	78	80	81	



Density: approx. 0.35 g/cm³
Hardness: approx. 58 Shore A

Format: approx. 1100 x 180 x 20 mm
Colours: 04 egg shell, 05 light beige, 07 flesh colour, 09 white, 10 champagne, 17 grey beige, 19 stone, 35 medium brown, 41 pale brown, 44 mocca, 46 dark brown, 54 smoke, 56 stone grey, 60 bright grey, 78 dark blue, 80 anthracite, 81 black

Format: approx. 1100 x 180 x 24 mm
Colours: 46 dark brown, 81 black

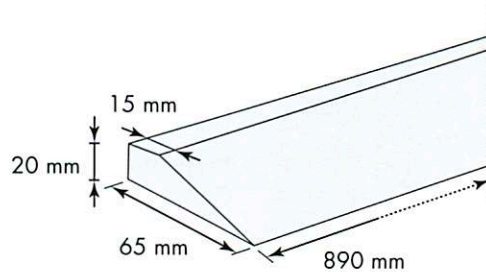
Format: approx. 860 x 215 x 24 mm
Colours: 46 dark brown, 81 black

nora® Lunalight K are the ideal wedge strips for economic heel built-up.

nora® Lunasoft SLW wedge EVA expanded wedge strips, smooth



04	07	09	17	19	35
41	44	46	56	78	81



Density: approx. 0.20 g/cm³
Hardness: approx. 30 Shore A

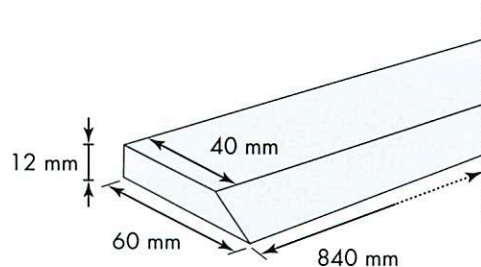
Format: approx. 890 x 65 x 20 mm
Colours: 04 egg shell, 07 flesh colour, 09 white, 17 grey beige, 19 stone, 35 medium brown, 41 pale brown, 44 mocca, 46 dark brown, 56 stone grey, 78 dark blue, 81 black

Properties: excellent shock-absorbing properties. High walking comfort thanks to a combination of very low Shore hardness, low weight and high stability.

nora® Schweizer Puffergummi wedge Expanded wedge strips, smooth



09	17	19	40	81
----	----	----	----	----



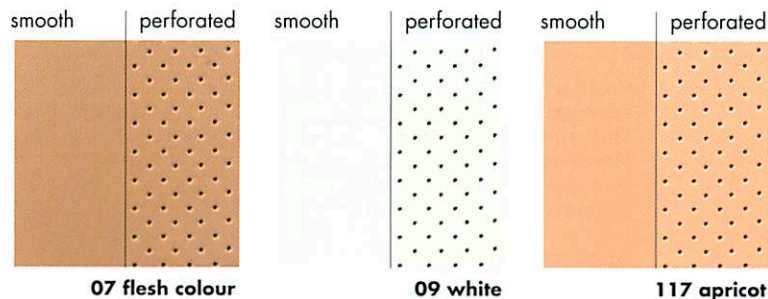
Density: approx. 0.38 g/cm³
Hardness: approx. 23 Shore A

Format: approx. 840 x 60 x 12 mm
Colours: 09 white, 17 grey beige, 19 stone, 40 terracotta, 81 black

nora® Schweizer Puffergummi is the first choice for applications requiring high resilience and shock-absorbance as well as dimensional stability. The wedges are the ideal solution as buffer heels.

Properties: excellent shock-absorbing properties. Excellent walking comfort thanks to a combination of very low Shore hardness and a high restoration capability.

Cushioning sheets



Product	Lunairmed			Lunairflex	Lunalastik
	No.	07	09	117	07
Thicknesses					
2 mm	•	•	•	•	•
3 mm	••	••	••	••	••
4 mm	•	•	•	•	•
5 mm	•	•	•	•	•
6 mm	••	••	••	••	••
8 mm	•			•	•
10 mm	•			•	
12 mm	•			•	
24 mm	•			•	

• = perforated

nora® Lunairmed

Density: approx. 0.08 g/cm³
Hardness: approx. 18 Shore A

EVA expanded sheets, smooth

Format: approx. 980 x 640 mm

Colour: 07 flesh colour

Thicknesses: 2/3/4/5/6/8/10/12/24 mm

09 white, 117 apricot

Thicknesses: 2/3/4/5/6 mm

EVA expanded sheets, perforated

Format: approx. 1280 x 980 mm

Colours: 07 flesh colour, 09 white, 117 apricot

Thicknesses: 3/6 mm

Applications:

cushioning sheets for inner shoes. For shaping elements for low stresses, e.g. calf prostheses, as upper material for interim, therapy, and bathing shoes, for beddings and shock-absorbers in inner shoes, for foot beddings for rheumatics and diabetics particularly suited for sandwich-type shoes.

Properties:

very low density, very soft, highly resilient. Excellent restoration capability and high walking comfort. Washable thanks to the closed cell structure.

Processing notes:

usual EVA bonding. Adapt contact pressure to the flexibility of the material, horizontal deformation is to be avoided. Thermoformable at 110° - 130°C.

nora® Lunairflex

Density: approx. 0.12 g/cm³
Hardness: approx. 22 Shore A

EVA expanded sheets, smooth

Format: approx. 980 x 640 mm

Colour: 07 flesh colour

Thicknesses: 2/3/4/5/6/8/10/12/24 mm

EVA expanded sheets, perforated

Format: approx. 1280 x 980 mm

Colour: 07 flesh colour

Thicknesses: 3/6 mm

Applications:

cushioning sheets for inner shoes. For shaping elements for medium stresses, e.g. calf prostheses, as upper material for interim, therapy, and bathing shoes, for beddings and shock-absorbers in inner shoes.

Properties:

very low density, soft, highly resilient, good restoration capability. Washable thanks to the closed cell structure.

Processing notes:

usual EVA bonding. Adapt contact pressure to the flexibility of the material, horizontal deformation is to be avoided. Thermoformable at 110° - 130°C.

nora® Lunalastik

Density: approx. 0.23 g/cm³
Hardness: approx. 25 Shore A

EVA expanded sheets, smooth

Format: approx. 850 x 610 mm

Colour: 07 flesh colour

Thicknesses: 2/3/4/5/6/8 mm

EVA expanded sheets, perforated

Format: approx. 1220 x 850 mm

Colour: 07 flesh colour

Thicknesses: 3/6 mm

Applications:

cushioning material for soft bedding inserts in orthopaedic custom-made shoes and in ready-made shoes, for cushioning for foot beddings, for cushioning support of the calcaneal spur.

Properties:

excellent cushioning properties, excellent restoration capability. Washable thanks to the closed cell structure. Excellent tear resistance.

Processing notes:

easy to bond (polychloroprene). Thermoformable at 110° - 130°C.

Cushioning sheets

nora® Supersorb Shock-absorber



82 brick red
2/4/5 mm

Profile: 13 rippled
Format: approx. 800 x 535 mm
Thicknesses: 2/4/5 mm
Hardness: approx. 28 Shore A
Density: approx. 1.10 g/cm³
Colour: 82 brick red

Applications:

very well suited for heel damping and cushioning in particular of sports shoes, function from approx. 300 kg of tread force. Both shock-absorbing and resilient, cushioning properties. Shock absorption at a thickness of 5 mm: approx. 95 %.

Processing notes:

sand slightly and bond with polychloroprene adhesive. When sanding or grinding, only press slightly onto the abrasive belt. In order to make full use of the visco-elastic properties of the material in all directions, do not bond on the complete surface, if possible.

nora® Orthosorb Shock-absorber



98 green
2/3/4 mm

Profile: 13 rippled
Format: approx. 800 x 535 mm
Thicknesses: 2/3/4 mm
Hardness: approx. 20 Shore A
Density: approx. 1.10 g/cm³
Colour: 98 green

Applications:

very well suited for heel damping and cushioning in particular for orthopaedic shoes. As compared to nora® Supersorb, a lesser dampening of nora® Orthosorb ensures a better cushioning and higher resilience, up to a tread force of approx. 300 kg. This corresponds to the walking load of a person of approx. 80 kg. Shock absorption at a thickness of 4 mm: approx. 83 %.

Stabilising sheets

nora® Norit Semi-expanded sheets, smooth



25 leather-coloured
2/3 mm

Format: approx. 1000 x 785 mm
Thicknesses: 2/3 mm
Hardness: approx. 95 Shore A
Density: approx. 1.10 g/cm³
Colour: 25 leather-coloured

Applications:

stabilising material for insert elements in orthopaedic shoes, e.g. rigid tongues, ankle supports, peroneal caps, and insoles.

Properties:

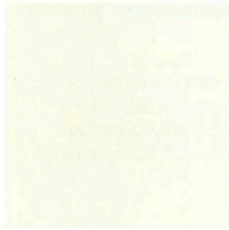
high dimensional stability and resilience. Excellent bending endurance, can be excellently sewn, cut, milled, and ground. Wear-resistant and washable.

Processing notes:

easy to bond with polychloroprene adhesive, thermoformable at 120° - 170°C.

Milling sheets

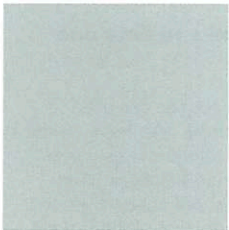
nora® Lunatec CAD 45 EVA expanded sheets, milling material



09 white
30/35 mm

Format: approx. 880 x 640 mm
Thickness: 30/35 mm
Hardness: approx. 45 Shore A
Density: approx. 0.22 g/cm³
Colour: 09 white

nora® Lunatec CAD 35 EVA expanded sheets, milling material



60 bright grey
30/35 mm

Format: approx. 880 x 650 mm
Thickness: 30/35 mm
Hardness: approx. 35 Shore A
Density: approx. 0.17 g/cm³
Colour: 60 bright grey

nora® Lunatec CAD 25 EVA expanded sheets, milling material



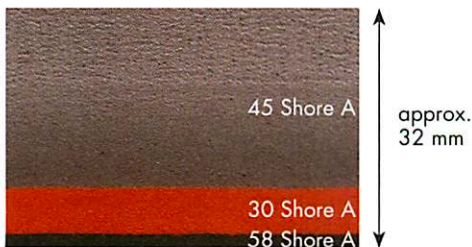
07 flesh colour
30/35 mm

Format: approx. 940 x 725 mm
Thickness: 30/35 mm
Hardness: approx. 25 Shore A
Density: approx. 0.12 g/cm³
Colour: 07 flesh colour

nora® Lunatec combiCAD 1 EVA expanded sheets, milling material

NEW

The vulcanised combination of:



Format: approx. 1150 x 780 mm

nora® Lunalight
EVA expanded sheets
Thickness: approx. 2 mm
Hardness: approx. 58 Shore A
Density: approx. 0.35 g/cm³
Colour: 80 anthracite

nora® Lunasoft SLW
EVA expanded sheets
Thickness: approx. 6 mm
Hardness: approx. 30 Shore A
Density: approx. 0.20 g/cm³
Colour: 137 terra

nora® Lunatec CAD 45
EVA expanded sheets
Thickness: approx. 24 mm
Hardness: approx. 45 Shore A
Density: approx. 0.22 g/cm³
Colour: 56 stone grey

nora® Lunatec combiCAD 1 is an innovative product development in milling sheets. Three different EVA expanded qualities are vulcanized together already during the manufacturing process and guarantee secure strength, without any bonding.

The development aimed at combining the optimal milling behaviour and the excellent functional properties of **nora® Lunatec CAD** materials with the enormous advantages of vulcanized composite sheets and thus to obtain an optimized processing.

The difference can be seen when processing the new **nora®** milling materials: the material can be excellently milled and the values for elongation at fracture, tensile strength, and replication are excellent. And no palpable shoulders result from irritating adhesive layers.

Composite sheets

nora® Lunatec combi



nora® Lunatec combi sheets are vulcanised compositions of proven nora® qualities. Permanently bonded ...

nora® Lunatec combi is an innovative product development in composite sheets: two different materials are vulcanized together already during the manufacturing process and guarantee secure strength, without any bonding. **nora® Lunatec combi** is the ideal basis for the manufacture of foot beddings and inserts in orthopaedic shoe engineering.

Permanently bonded ... these are your benefits:

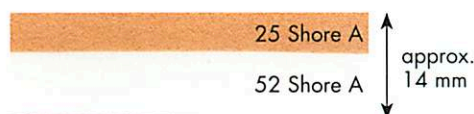
- No gluing required.
- No displacement of the different materials when processing.
- A higher retention of volume because no deep drawing required.
- The composite sheets are thermoformable between 120°C - 130°C.
- Further advantages as compared to glued products:
No bubble formation at the joints and no hardening because of the adhesive film.

Benefit from the efficient insert manufacture thanks to time and cost savings.

In orthopaedics shoe engineering, different material combinations are used depending on diagnosis, symptoms, and weight of the patients. We have already "bonded" for you six different material combinations. The combinations consist of materials with bedding, permanently resilient, or stabilising functions. And **you** decide which combination is suitable for the individual patient and which materials are to be added to guarantee an optimum management of the patient.

nora® Lunatec combi 1

The vulcanised combination of:



Format: approx. 925 x 580 mm

nora® Lunastik

EVA expanded sheets

Thickness: approx. 6 mm
Hardness: approx. 25 Shore A
Density: approx. 0.23 g/cm³
Colour: 07 flesh colour

permanently resilient cushioning properties

nora® Lunasoft AL

EVA expanded sheets

Thickness: approx. 8 mm
Hardness: approx. 52 Shore A
Density: approx. 0.26 g/cm³
Colour: 09 white

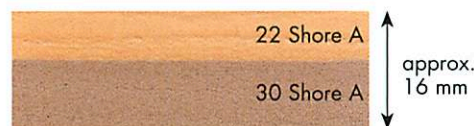
stabilising properties

Areas of application:

basis for orthopaedic foot beddings and inserts with permanently resilient and stabilising function for increased stress. Suitable for geriatric foot, diabetes, and rheumatism, but also suitable as basis for sports inserts.

nora® Lunatec combi 2

The vulcanised combination of:



Format: approx. 880 x 600 mm

nora® Lunairflex

EVA expanded sheets

Thickness: approx. 6 mm
Hardness: approx. 22 Shore A
Density: approx. 0.12 g/cm³
Colour: 07 flesh colour

bedding cushioning properties

nora® Lunasoft SLW

EVA expanded sheets

Thickness: approx. 10 mm
Hardness: approx. 30 Shore A
Density: approx. 0.20 g/cm³
Colour: 17 grey beige

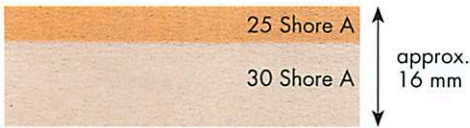
permanently resilient cushioning properties

Areas of application:

basis for orthopaedic foot beddings, in particular diabetes-adapted foot beddings with bedding and at the same time permanently resilient function. Suitable for moderate stress given sensitive feet (e.g. geriatric foot), rheumatism, and advanced-stage diabetes.

nora® Lunatec combi 3

The vulcanised combination of:



Format: approx. 870 x 580 mm

nora® Lunalastik

EVA expanded sheets

Thickness: approx. 6 mm
Hardness: approx. 25 Shore A
Density: approx. 0.23 g/cm³
Colour: 07 flesh colour

permanently resilient cushioning properties

nora® Lunasoft SLW

EVA expanded sheets

Thickness: approx. 10 mm
Hardness: approx. 30 Shore A
Density: approx. 0.20 g/cm³
Colour: 19 stone

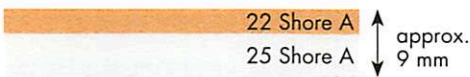
permanently resilient cushioning properties

Areas of application:

basis for orthopaedic foot beddings, in particular diabetes-adapted foot beddings with permanently resilient function. Best suitable for medium stress for the management of geriatric foot, and advanced-stage diabetes and rheumatism.

nora® Lunatec combi 4

The vulcanised combination of:



Format: approx. 870 x 580 mm

nora® Lunairflex

EVA expanded sheets

Thickness: approx. 3 mm
Hardness: approx. 22 Shore A
Density: approx. 0.12 g/cm³
Colour: 07 flesh colour

bedding cushioning properties

nora® Lunalastik

EVA expanded sheets

Thickness: approx. 6 mm
Hardness: approx. 25 Shore A
Density: approx. 0.23 g/cm³
Colour: 09 white

permanently resilient cushioning properties

Areas of application:

basis for orthopaedic foot beddings, in particular diabetes-adapted foot beddings with bedding and at the same time permanently resilient function. Best suitable for increased stress for the management of geriatric foot, and advanced-stage diabetes and rheumatism. The combination with a stabilising nora® Luna product, e.g. Lunasoft AL, Lunalight A, or Lunacell A is recommended.

nora® Lunatec combi 5

NEW

The vulcanised combination of:



Format: approx. 850 x 590 mm

nora® Lunairflex

EVA expanded sheets

Thickness: approx. 3 mm
Hardness: approx. 22 Shore A
Density: approx. 0.12 g/cm³
Colour: 60 bright grey

bedding cushioning properties

nora® Lunasoft SLW

EVA expanded sheets

Thickness: approx. 3 mm
Hardness: approx. 30 Shore A
Density: approx. 0.20 g/cm³
Colour: 111 royal blue

permanently resilient cushioning properties

Areas of application:

basis for efficiently finished, thin, bedding inserts, e.g. a long-soled insert with optimal soft bedding in the forefoot. Suitable for the cushioning of orthoses, prostheses, and soft sockets.

nora® Lunatec combi 6

NEW

The vulcanised combination of:



Format: approx. 880 x 560 mm

nora® Lunasoft SLW

EVA expanded sheets

Thickness: approx. 4 mm
Hardness: approx. 30 Shore A
Density: approx. 0.20 g/cm³
Colour: 137 terra

permanently resilient cushioning properties

nora® Lunasoft AL

EVA expanded sheets

Thickness: approx. 10 mm
Hardness: approx. 52 Shore A
Density: approx. 0.26 g/cm³
Colour: 81 black

stabilising properties

Areas of application:

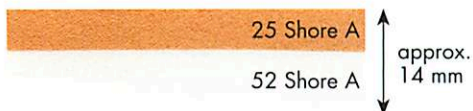
basis for efficiently finished sporty and modern inserts or footbeddings, e.g. long-soled sports inserts.

Composite wedges

nora® Lunatec combi SK 1

NEW

The vulcanised combination of:



Format: approx. 850 x 270 mm (size 1/35–39)
approx. 850 x 300 mm (size 2/40–44)
approx. 850 x 340 mm (size 3/45–49)
approx. 850 x 380 mm (size 4/>49)

nora® Lunalastik

EVA expanded sheets

Thickness: approx. 6 mm
Hardness: approx. 25 Shore A
Density: approx. 0.23 g/cm³
Colour: 07 flesh colour

permanently resilient cushioning properties

nora® Lunasoft AL

EVA expanded sheets

Thickness: approx. 2-8 mm
Hardness: approx. 52 Shore A
Density: approx. 0.26 g/cm³
Colour: 09 white

stabilising properties

Thanks to its wedge-like shape, **nora® Lunatec combi SK 1** is the ideal basis for the efficient manufacture of inserts in only a few steps. In combination with other **nora® Luna** products, this wedge is the perfect basis for orthopaedic foot beddings

Properties and product benefits:

- strength and edge stability in the hindfoot and metatarsus thanks to the stabilising properties of Lunasoft AL
- high elasticity in the forefoot thanks to the permanently resilient cushioning properties of Lunalastik
- perfect support in the retrocapital area thanks to specific wedge-like shape
- efficient processing thanks to less material usage and less grinding
- no bonding required and no displacement of the different materials when processing
- high level of retention of volume because the material is only compressed at the required places and no deep drawing is required

Areas of application:

the composite wedge **nora® Lunatec combi SK 1** is the ideal combination for the manufacture of individual long-soled sports inserts and long-soled inserts for flat splay feet. In combination with other Luna products, **Lunatec combi SK 1** is the optimal basis for orthopaedic foot beddings and inserts for geriatric feet and rheumatism.

Slip protection articles

Accident prevention made easy.

With **SPIKY & SPIKY PLUS**, the optimal slip protection for ice and snow.

Be it ice, snow or slush: these road conditions make walking troublesome, often also dangerous. In these cases, the shoe spikes **SPIKY** and **SPIKY PLUS** are a useful aid. These are rubber soles with steel spikes which are slipped over the shoes and thus protect against slipping and contribute to prevent accidents.

Slipping on is very easy: Two simple steps are sufficient and you are „back on solid ground“. Pull **SPIKY** or **SPIKY PLUS** tightly over the front shoe and tighten the backstrap with the heel element over the back shoe cap.

SPIKY offers slip protection in the sole area and is particularly suited for the ladies' shoes with small heel tread surfaces. **SPIKY PLUS** has spikes in the front sole area as well as additional spikes in the heel area. Both products are lightweight and come in a small bag for easy use.

nora® Spiky Slip protection for ice and snow



Spikes in the sole area

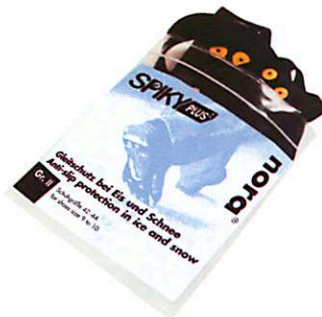
Sizes: Size I up to shoe size 7 (40)
Size II shoe size 8-9 (41-43)
Size III from shoe size 10 (44)

Colour: 81 black

Packaging unit:

1 pair in a resealable PE bag
10 pairs in a sales box having advertising effect

nora® Spiky Plus Slip protection for ice and snow



Spikes in the heel and sole area

Sizes: Size I up to shoe size 8 (41)
Size II shoe size 9-10 (42-44)
Size III from shoe size 11 (45)

Colour: 81 black

Packaging unit:

1 pair in a resealable PE bag
10 pairs in a sales box having advertising effect

Expanded sheet product range

This overview lists the standard colours which can be ideally combined.

For further coloured and patterned versions, e.g. of **nora® Lunasoft SL**, please see the corresponding product pages.

		Colour number							
		04	05	07	09	10	17	1	
Material	Version/Profil								
Astro Soft	87 Mini Non-Slip								
Astro Soft	96 Block fine								
Astro Soft	09 Coarse cross pattern								
Astrolight	95 Delta								
Astrolight	64 Star								
Astro	64 Star								
Astro	12 Groove								
Astro	43 Rekord								
Astro	58 Coarse wave								
Astro	59 Coarse crepe								
Astro	62 Medium crepe								
Astro K	62 Medium crepe wedge strips								
Astro	65 Suction cup								
Lunasoft	97 Pastille								
Lunasoft	78 Coarse wave								
Lunalight	20 Leather grain								
Lunacell									
Lunalight A									
Lunalight K	Wedge strips								
Lunasoft AL									
Lunatec SE									
Lunasoft SL									
Lunasoft SLW									
Lunasoft SLW	Wedge strips								
Lunalastik									
Lunairflex									
Lunairmed									

»» Conformity declaration ««

For materials used to produce a medical product, the German Medical Products Law (MPG – Directive 93/42/EEC) requires the certification of safety of the materials used with regard to

- toxicology and
- carcinogenicity.

nora[®] products fully comply with the requirements of MPG. **nora**[®] products do not contain any toxicologically harmful and no carcinogenic substances as e.g. carcinogenic amines from azo dyes.

In addition, **nora**[®] products are certified by regular tests carried out by renowned test institutes and may bear the following quality seals:

- **skin tolerability certificate of the Institute Fresenius**
- **SG test mark "Schadstoffgeprüft"**
- **SG plus test mark**

A prerequisite for the use of the above mentioned quality seals is a continuous production monitoring by a quality management system. The certification according to DIN EN ISO 9001 guarantees the constant quality of manufacture, distribution, and marketing of the **nora**[®] products.

Confirmed in December 2007.



P. Müller
Manager Sales and Marketing



Dr. G. Heidecke
Technical officer for occupational
safety - chemistry

nora systems GmbH
shoe components
Höhnerweg 2-4
69469 Weinheim
Germany

Local Court of Mannheim
HRB 703230
Managing directors:
Heinz Futscher
Christa Hoffmann
Philipp Leferenz

Transparent sheet product range

Colour number		01	03	09	11	15	19	43	46	54	81	104	Details
Material	Version/profile												Page
Astral	62 Medium crepe												24
Astral K	62 Medium crepe wedge strips												17
Astral	26 Fine crepe												24
Astral	87 Mini-Non-Slip												25
Astral	95 Delta												25
Astral	58 Coarse wave												25
Astral	03 Cross pattern												25
Astral	74 Double saw tooth												25
Durotrans	34 Grid												26
Durotrans	48 Block												27
Durotrans	36 Square												27
Durotrans	35 Pastille												26
Durotrans	37 Prism												27
Astral H	62 Medium crepe												15
Astral H	62 Medium crepe wedge strips												16

41	44	46	54	56	57	60	78	80	81	Details Page
										31
										32
										31
										30
										30
										29
										28
										28
										28
										28
										28
										28
										29
										33
										32
										32
										41
										35
										42
										36
										36
										37
										40
										42
										43
										43
										43



Freudenberg Industrial Park

About **nora systems GmbH**

nora systems GmbH develops, produces and markets high-quality, resilient floorcoverings made of rubber as well as shoe components under the brand name **nora®**. The company has more than 900 employees worldwide and achieved a turnover of €158.2 mio. in 2006. Almost everybody has at least once stood on **nora®** products, be it with own shoes or on the floorcoverings.

Note:

The data contained in this brochure serve as information on the presented products. The statements given represent descriptions or identifications, however, no guaranteed properties. We reserve the right to modify technical values within the scope of product improvements.

This brochure and the photographs and illustrations contained are subject to a copyright of **nora systems GmbH**, Weinheim, and may be used only with its prior written approval.

Printed on 100 % chlorine-free bleached paper.

nora systems GmbH

shoe components
Höhnerweg 2-4

69469 Weinheim, Germany

Phone national: +49 6201 80-5342

Phone international: +49 6201 80-7716

Fax: +49 6201 88-4683

Email: info-shoe@nora.com

Internet: www.nora-shoe.com

nora SYSTEMS GMBH
| shoe components